

CANINE HOLTER MONITORING REPORT

ALBA Medical Systems, Inc.

www.albamedical.com

Holter Monitor Report

Patient Name: Sample Report- Abnormal

Physician:

Date of Birth:

Scan Number:

ID #: 1

Date Recorded: 12/19/2017

Age: 7 Years

Date Processed: 12/21/2017

Sex: F

Recorder Num: 030883

Indications: DOBERMAN

HookupTech:

Medications:

GEORGIA was monitored for a total of 23:50 hours. The total time analyzed was 23:34 hours. Start time was 8:32PM1. There were a total of 132539 Beats. (13.9%) were Ventricular beats, less than 1% were Supraventricular beats, and less than 1% were Paced beats.

Mean Heart Rate: 94
Maximum Heart Rate: 207 at 6:10:06PM2
Minimum Heart Rate: 36 at 4:14:39AM2
Pauses: 0 (Greater than 5 sec.)

Ventricular Ectopy			Supraventricular Ectopy		
Total:	18504		Total:	6	
Single:	11016		Single:	6	
Pairs:	3205		Pairs:	0	
Total Runs:	336		Total Runs:	0	
Beats in Runs:	1078		Beats in Runs:	0	
#	beats	@rate	#	beats	@rate
Longest Run:	10 @	4:45PM2	111	Longest Run:	0 @ 8:32PM1 0
Fastest Run:	4 @	4:38PM2	211	Fastest Run:	0 @ 8:32PM1 0

Comments:

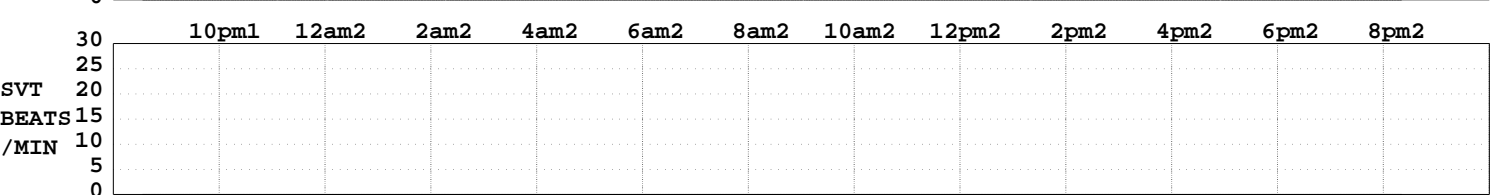
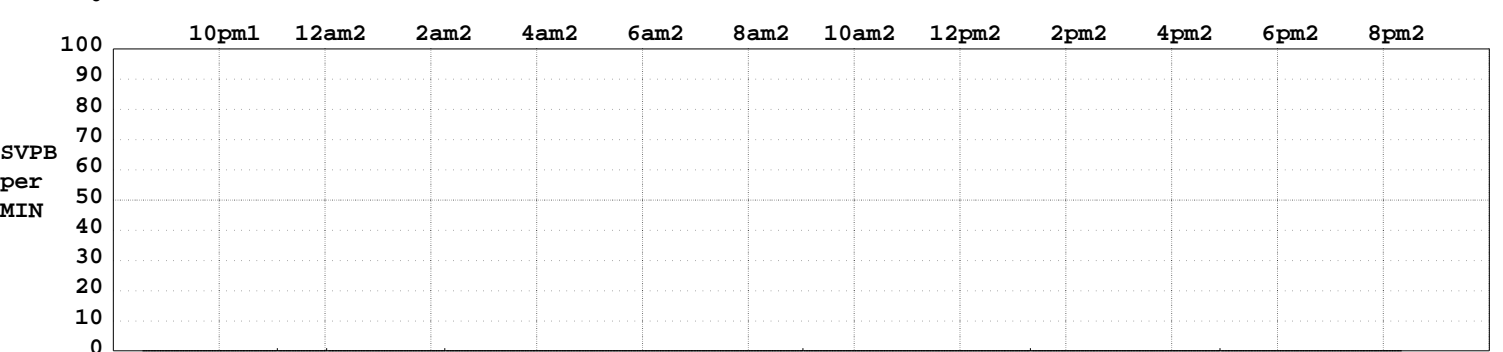
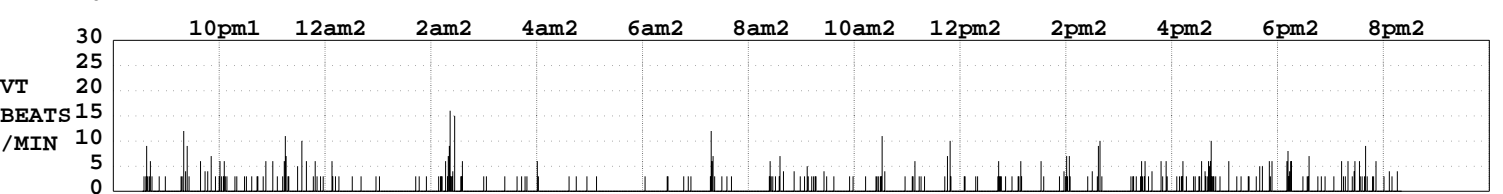
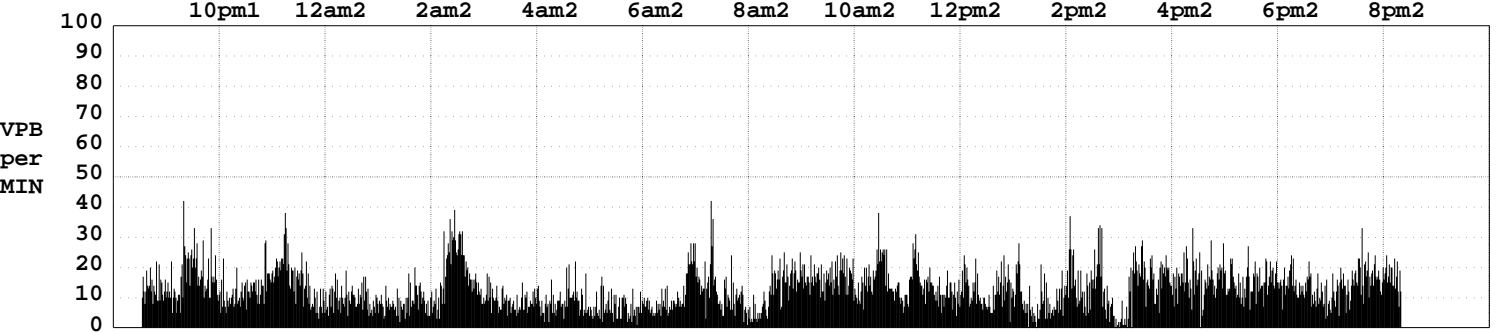
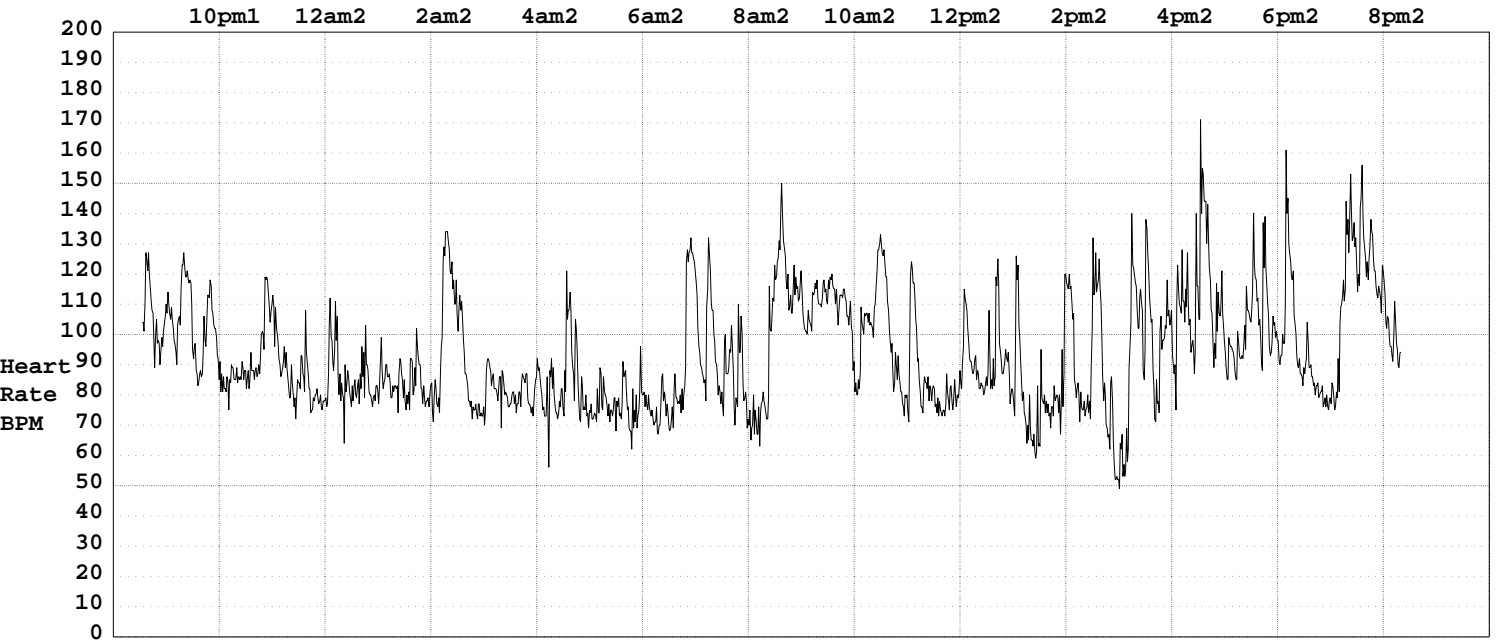
Frequent ventricular premature beats were noted throughout with pairs, triplets and runs.

Physician's Signature:

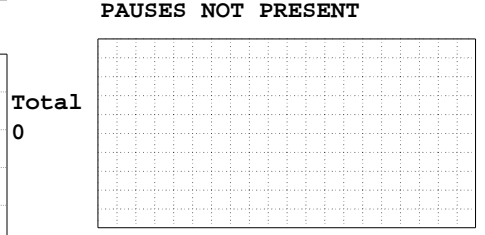
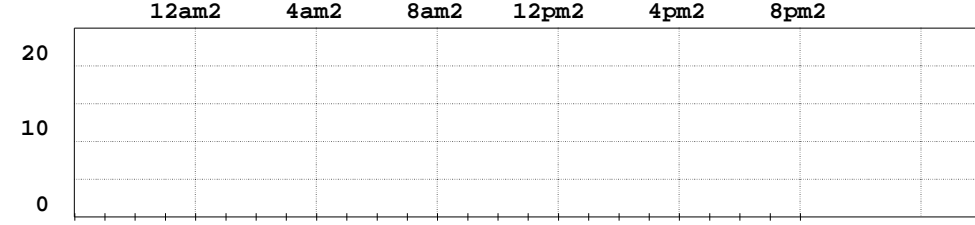
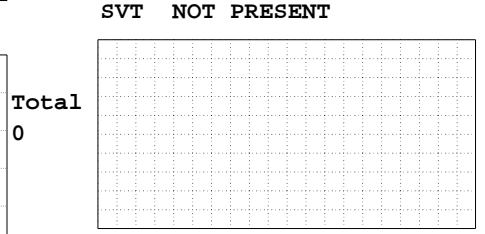
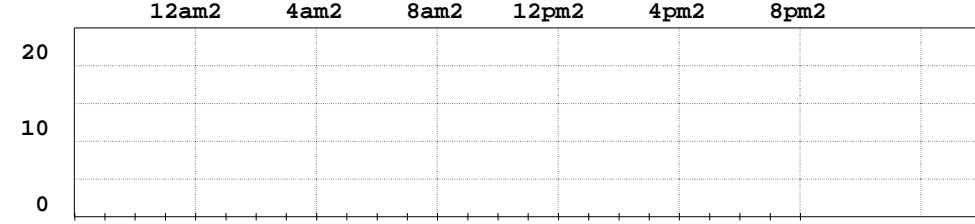
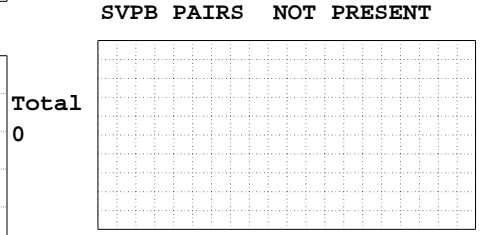
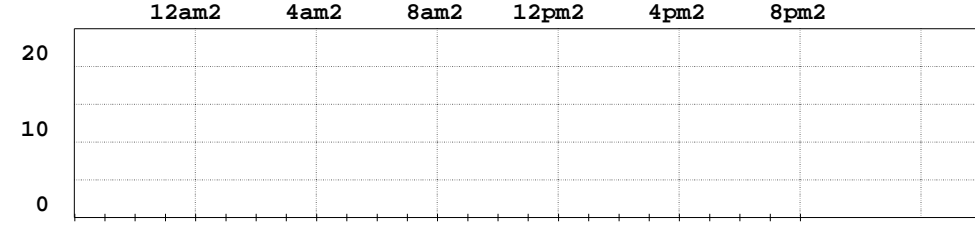
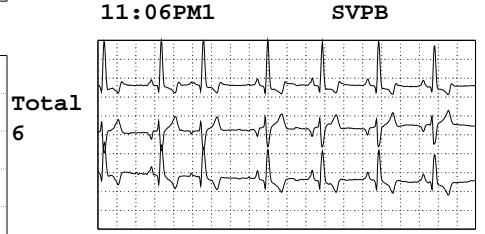
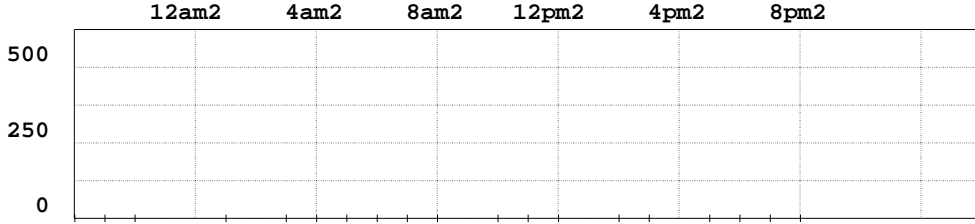
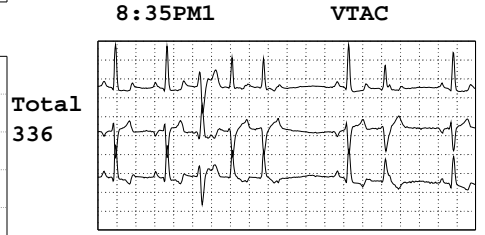
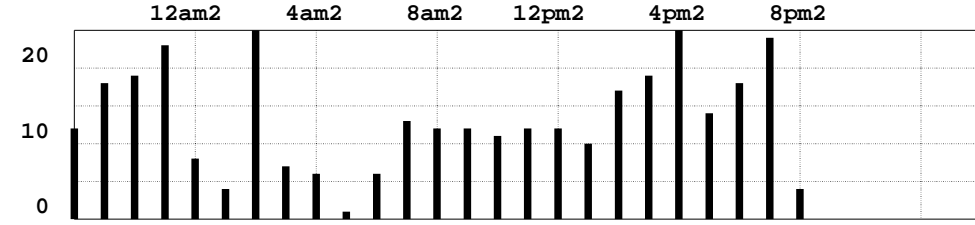
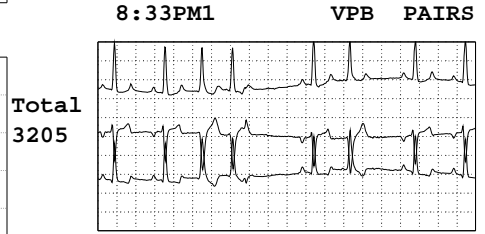
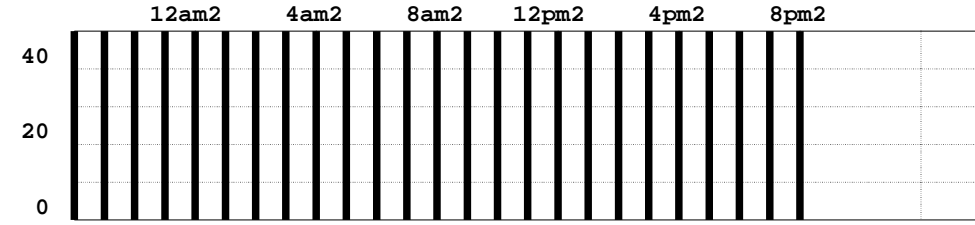
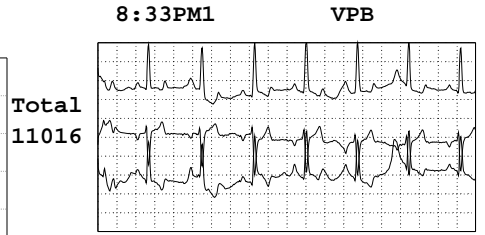
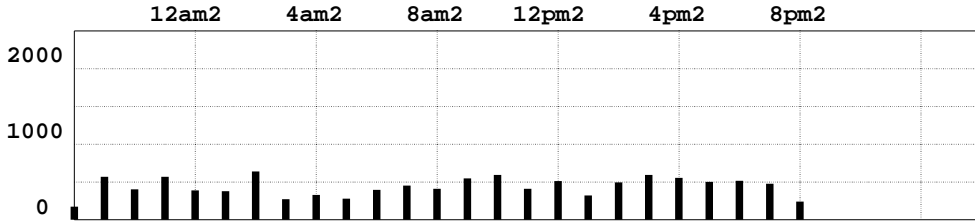
GENERAL PROFILE

INTERVAL STARTING	HEART RATE			TOTAL BEATS	VPB TOTAL	VPB PAIRS	RUNS VT	SVPB TOTAL	SVPB PAIRS	RUNS SVT	PAUSES	TIME ANALYZED
	LO	MEAN	HI									
8:32PM1	72	105	145	2637	361	76	12	0	0	0	0	0:24
9:00PM1	80	104	150	6116	1011	192	18	0	0	0	0	0:58
10:00PM1	58	91	133	5432	747	144	19	0	0	0	0	0:59
11:00PM1	62	86	125	5193	956	153	23	1	0	0	0	0:59
12:00AM2	63	86	131	5142	581	84	8	1	0	0	0	0:59
1:00AM2	56	84	125	5033	509	59	4	0	0	0	0	0:59
2:00AM2	73	94	156	5603	1092	181	27	1	0	0	0	0:59
3:00AM2	60	81	110	4895	543	125	7	0	0	0	0	0:59
4:00AM2	36	84	140	5045	535	94	6	0	0	0	0	0:59
5:00AM2	62	77	118	4586	405	62	1	0	0	0	0	0:59
6:00AM2	37	84	144	5052	615	101	6	0	0	0	0	0:59
7:00AM2	67	93	156	5567	765	137	13	0	0	0	0	0:59
8:00AM2	56	100	166	5986	721	136	12	0	0	0	0	0:59
9:00AM2	80	110	133	6634	1024	219	12	1	0	0	0	0:59
10:00AM2	59	100	147	5967	913	141	11	0	0	0	0	0:59
11:00AM2	63	84	138	5083	833	190	12	0	0	0	0	0:59
12:00PM2	71	92	138	5504	727	90	12	0	0	0	0	0:59
1:00PM2	63	79	158	4735	545	97	10	1	0	0	0	0:59
2:00PM2	48	89	152	5335	806	129	17	0	0	0	0	0:59
3:00PM2	49	94	161	5613	865	106	19	0	0	0	0	0:59
4:00PM2	72	111	196	6494	970	162	27	1	0	0	0	0:58
5:00PM2	75	102	196	6102	915	183	14	0	0	0	0	0:59
6:00PM2	69	95	207	5664	785	106	18	0	0	0	0	0:59
7:00PM2	71	117	174	6865	907	178	24	0	0	0	0	0:58
8:00PM2	78	101	135	2256	373	60	4	0	0	0	0	0:22
SUMMARY :	36	94	207	132539	18504	3205	336	6	0	0	0	23:34

HEART RATE TREND (24 hours)



CRITICAL EVENTS

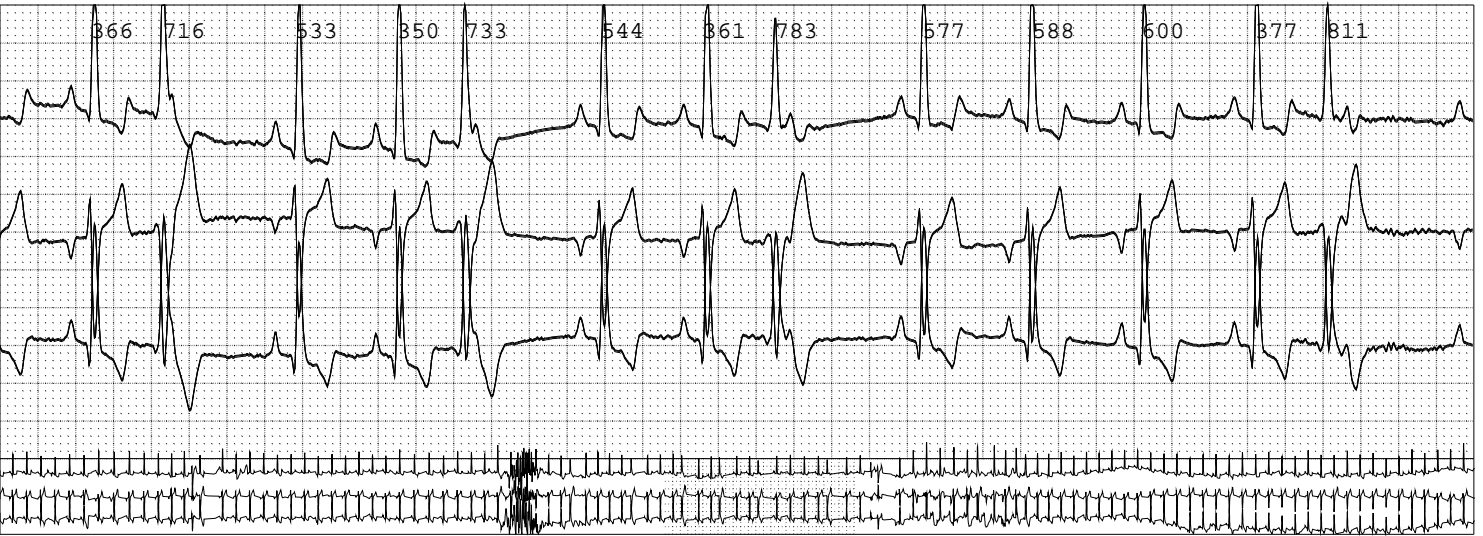


FULL-SIZED STRIPS

8:59:41PM1

Early VPB

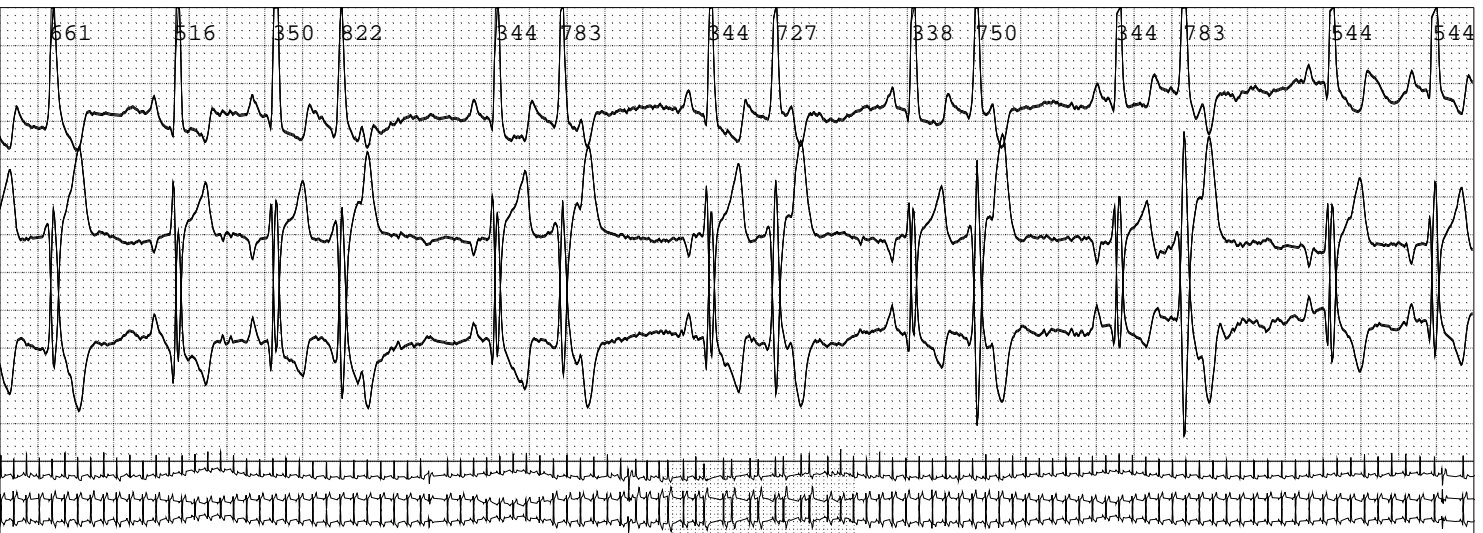
HR = 106



9:01:13PM1

Early VPB

HR = 107



9:06:37PM1

Early VPB

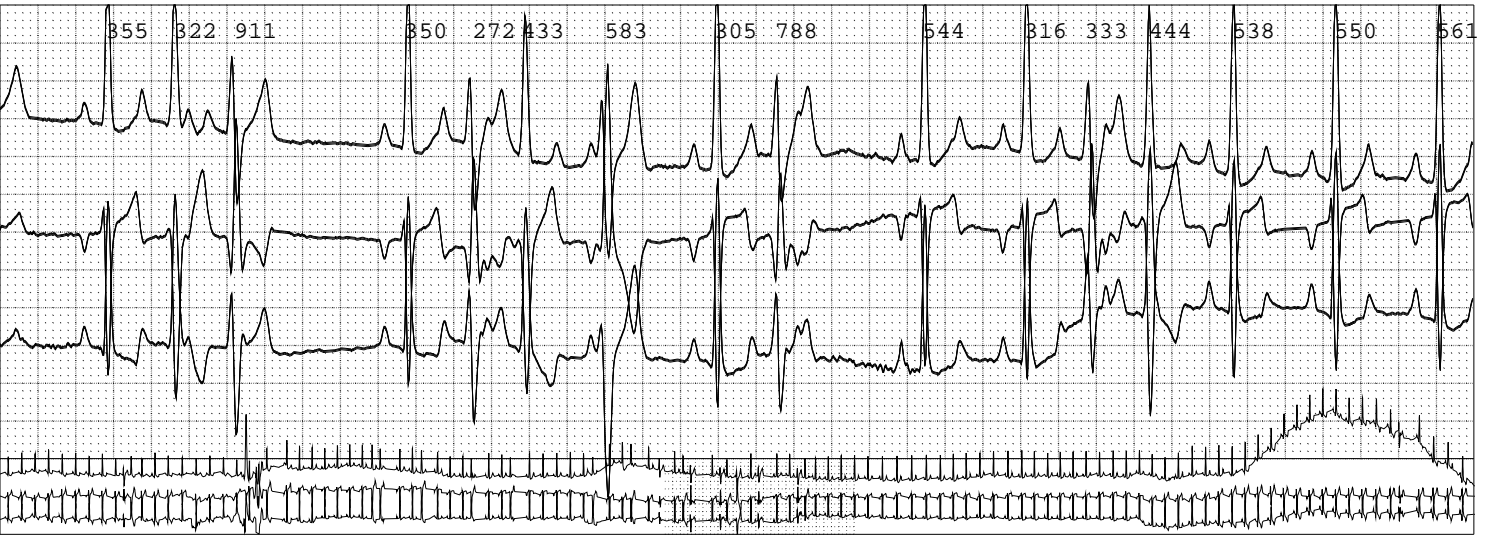
HR = 109



9:06:38PM1

Early VPB

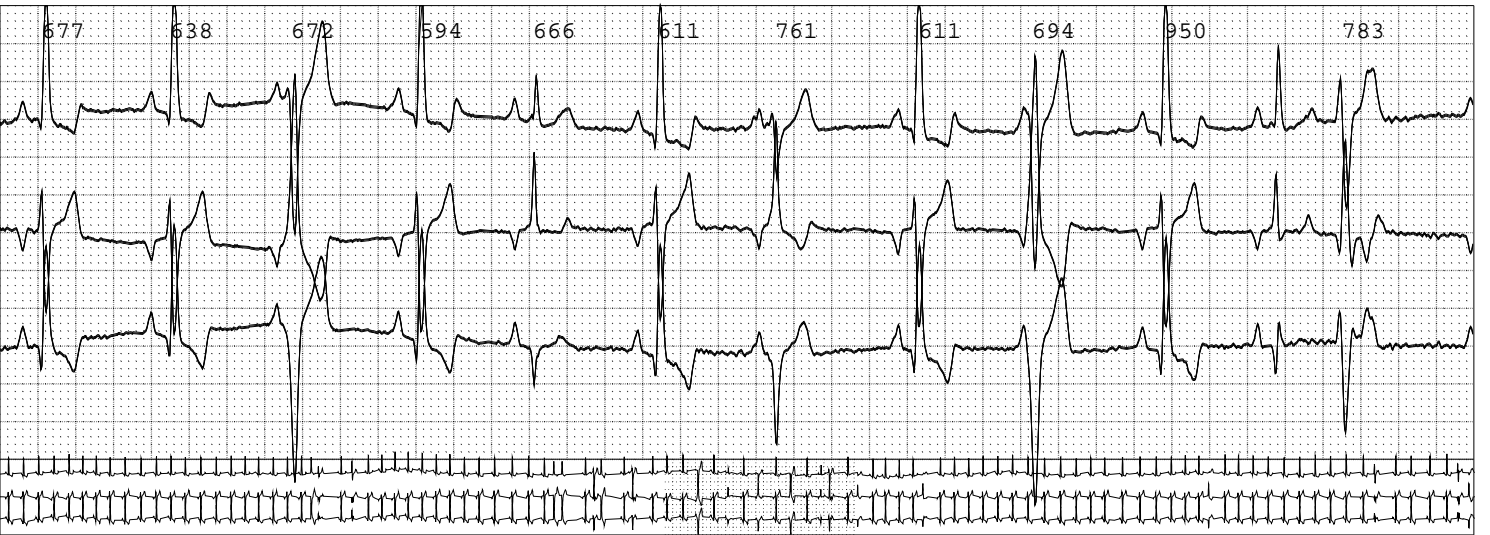
HR = 111



9:09:56PM1

Early VPB

HR = 95

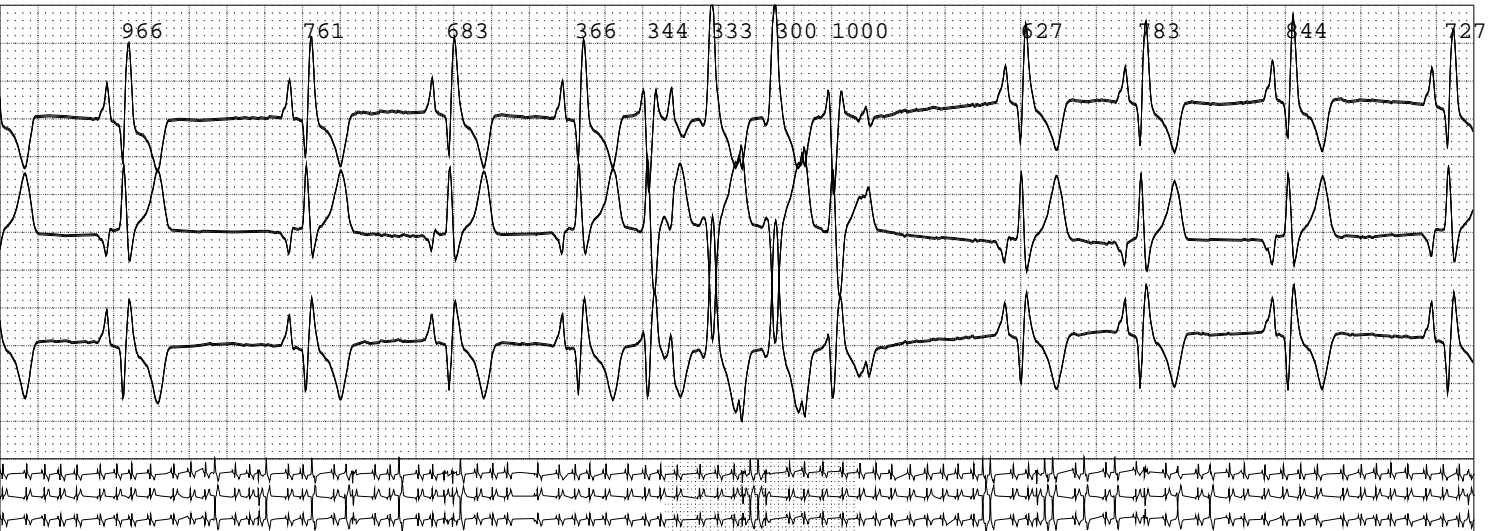


9:39:02PM1

VTAC

HR = 90

HR2 = 177

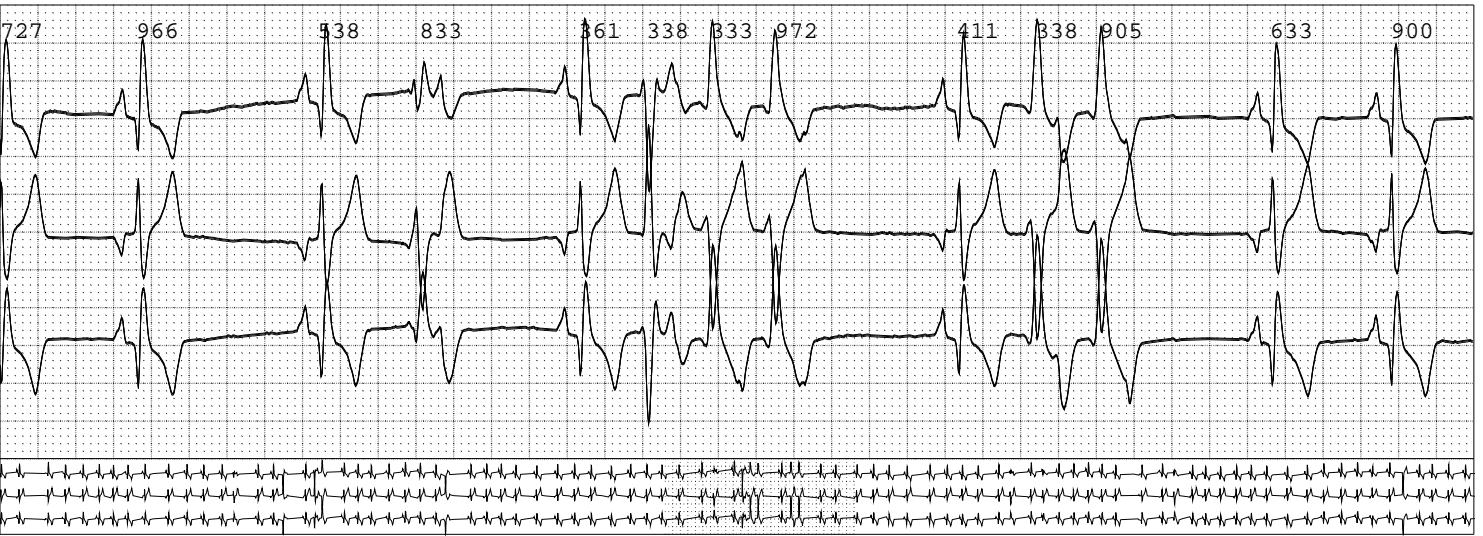


10:00:35PM1

TRIPLET

HR = 87

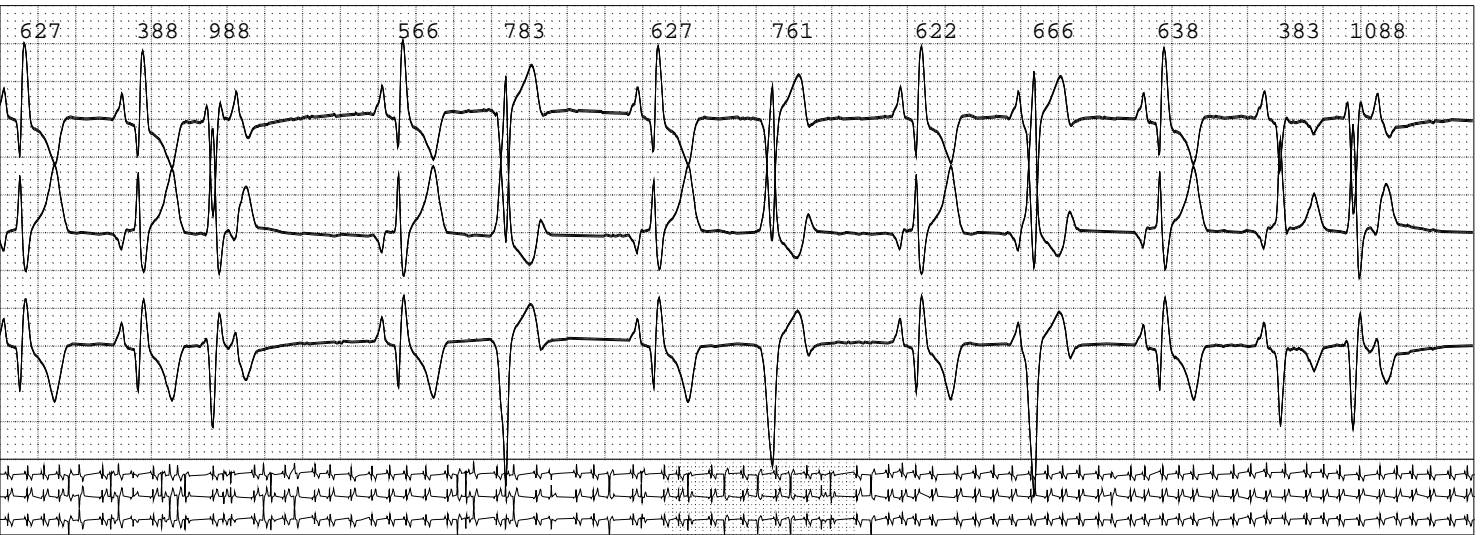
HR2 = 178



10:05:49PM1

Early VPB

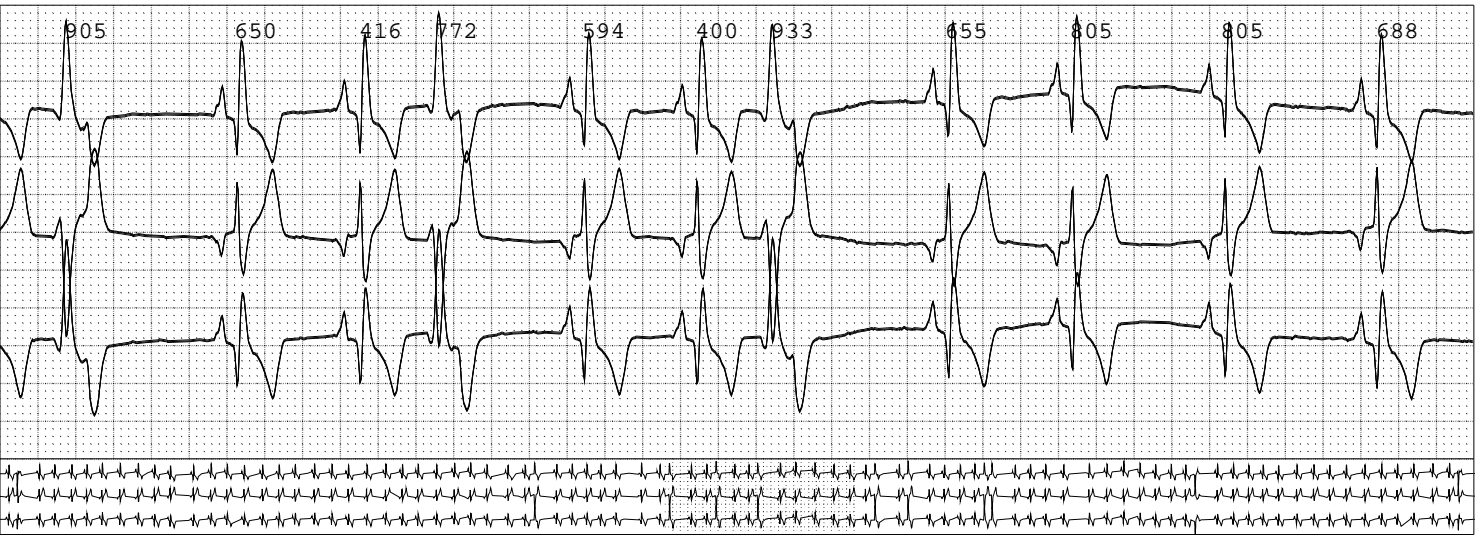
HR = 87



10:23:36PM1

Early VPB

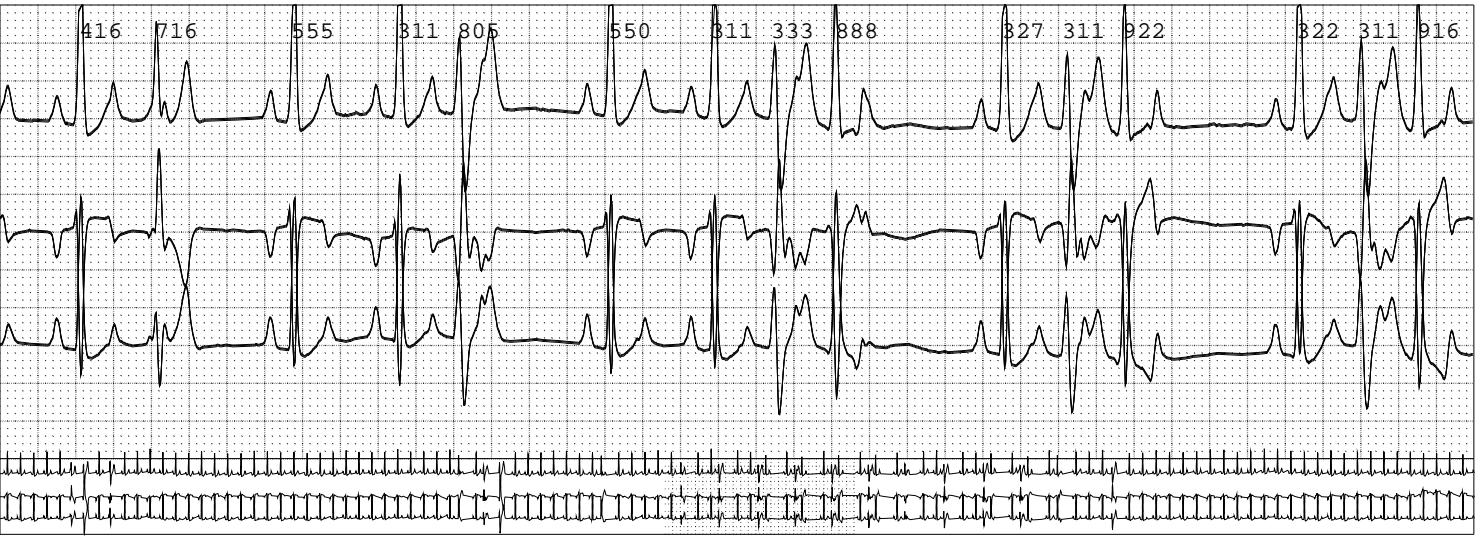
HR = 95



10:57:37PM1

Early VPB

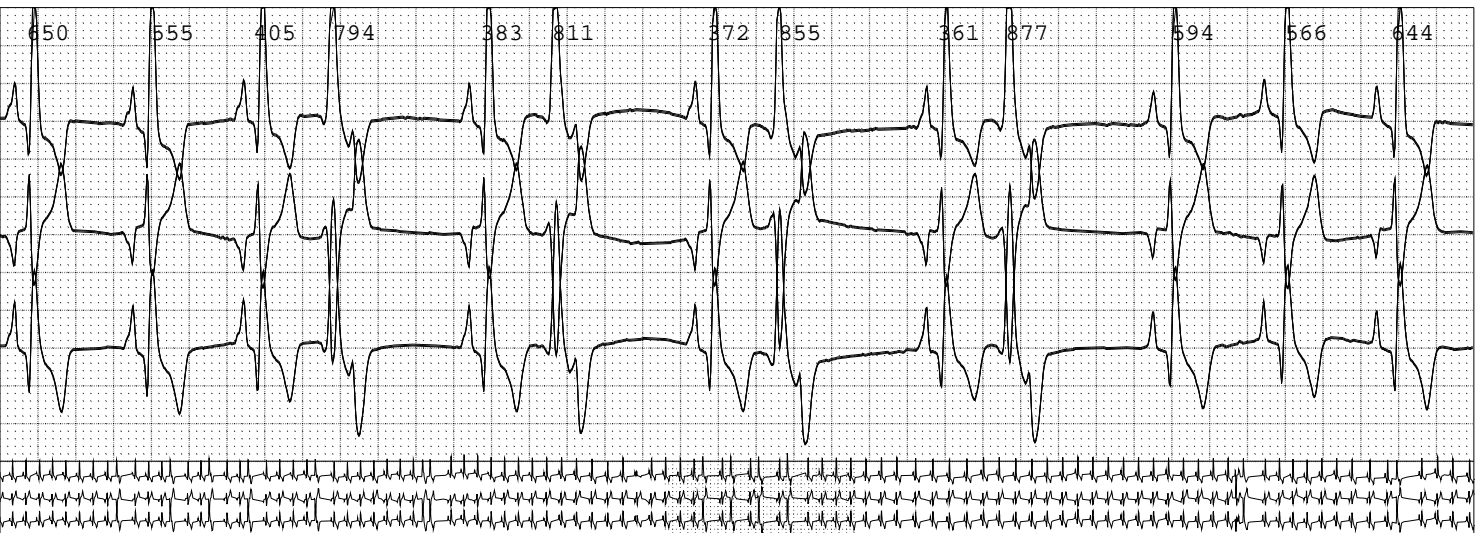
HR = 109



11:05:46PM1

Early VPB

HR = 96

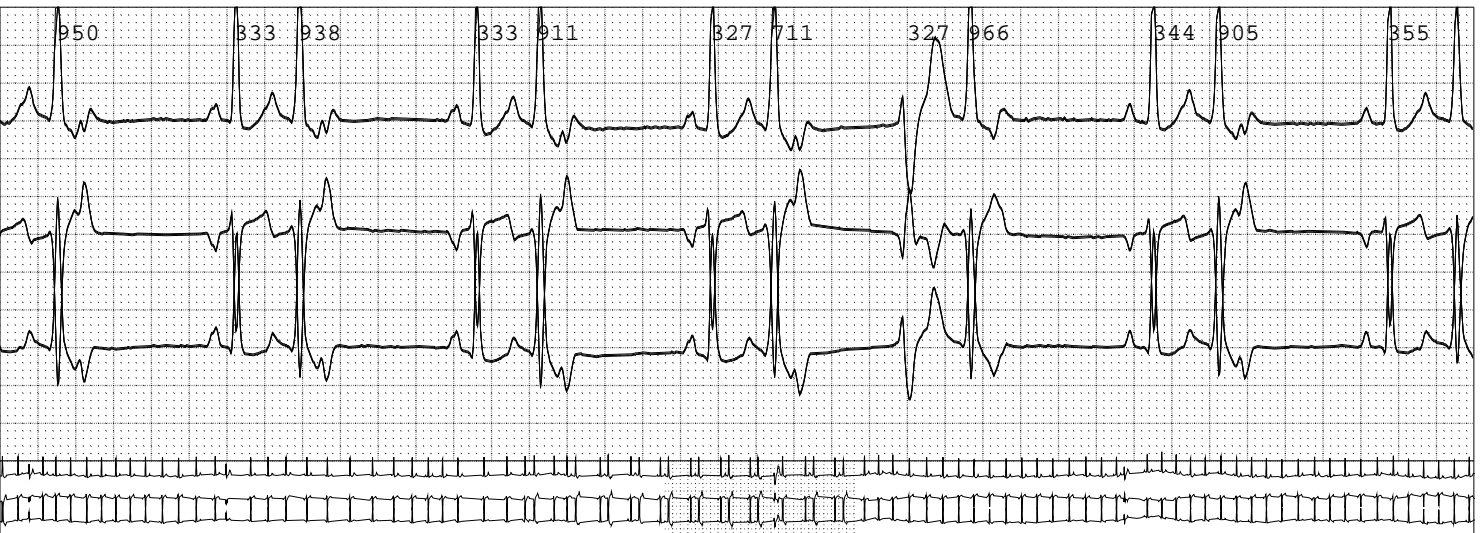


11:39:58PM1

TRIPLET

HR = 80

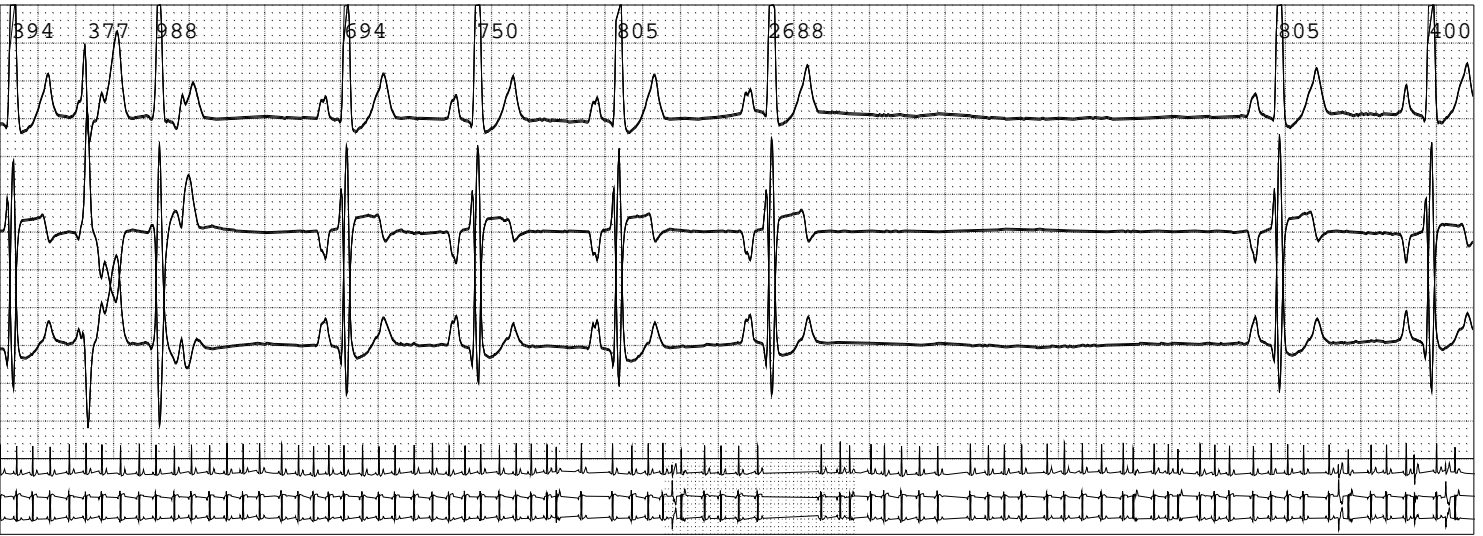
HR2 = 115



12:18:38AM2

Longest RR

HR = 83



2:09:38AM2

TRIPLET

HR = 90

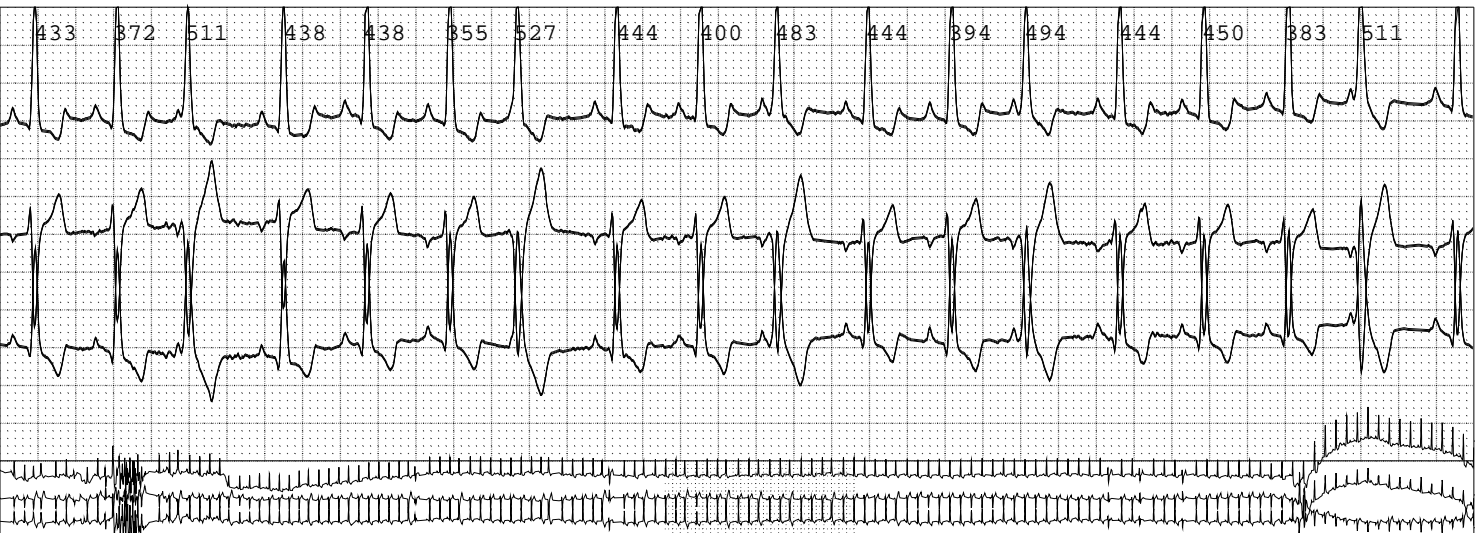
HR2 = 158



2:19:16AM2

Early VPB

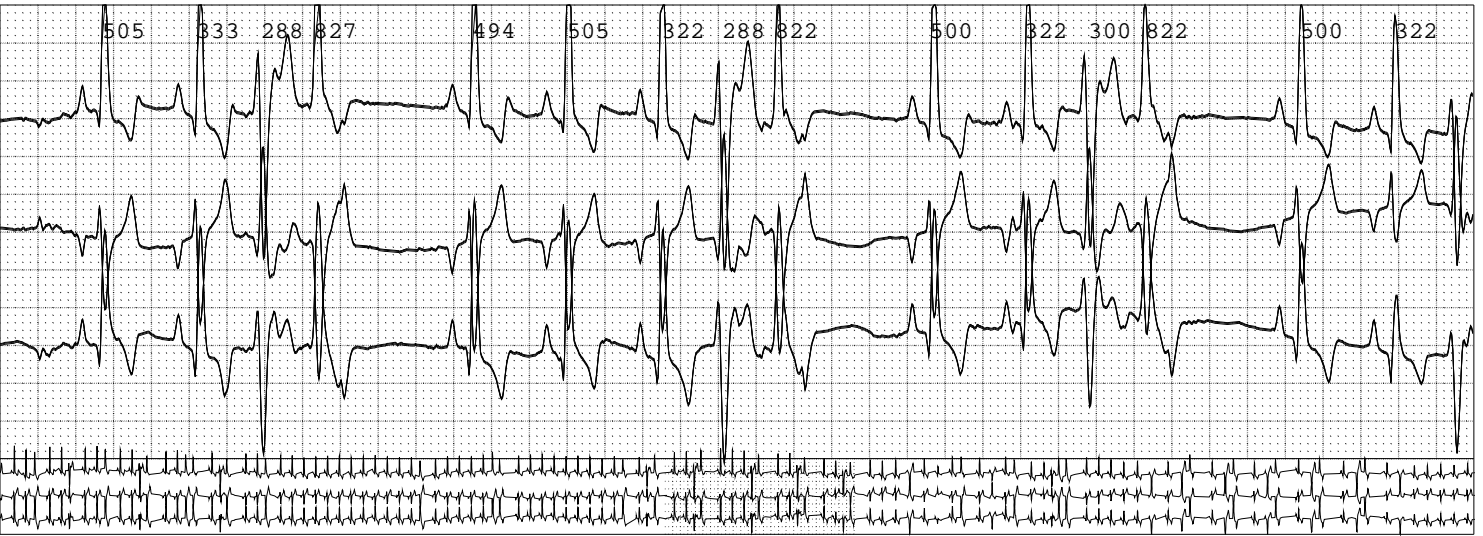
HR = 134



2:27:14AM2

VPB pair

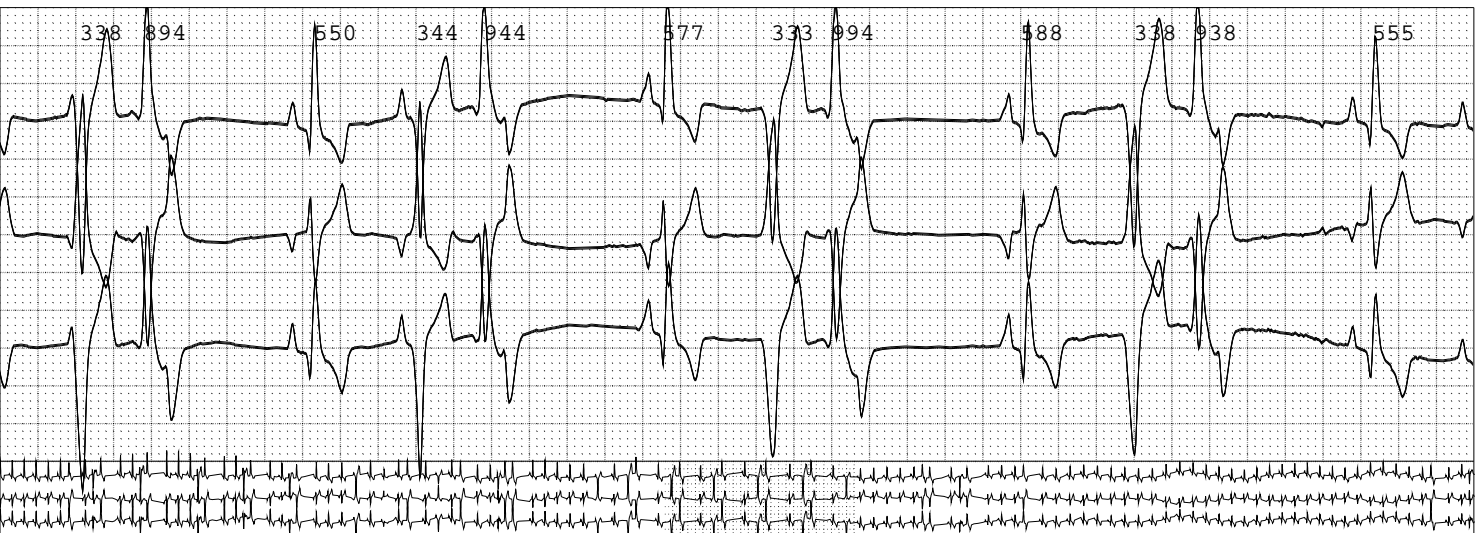
HR = 110



2:27:37AM2

VPB pair

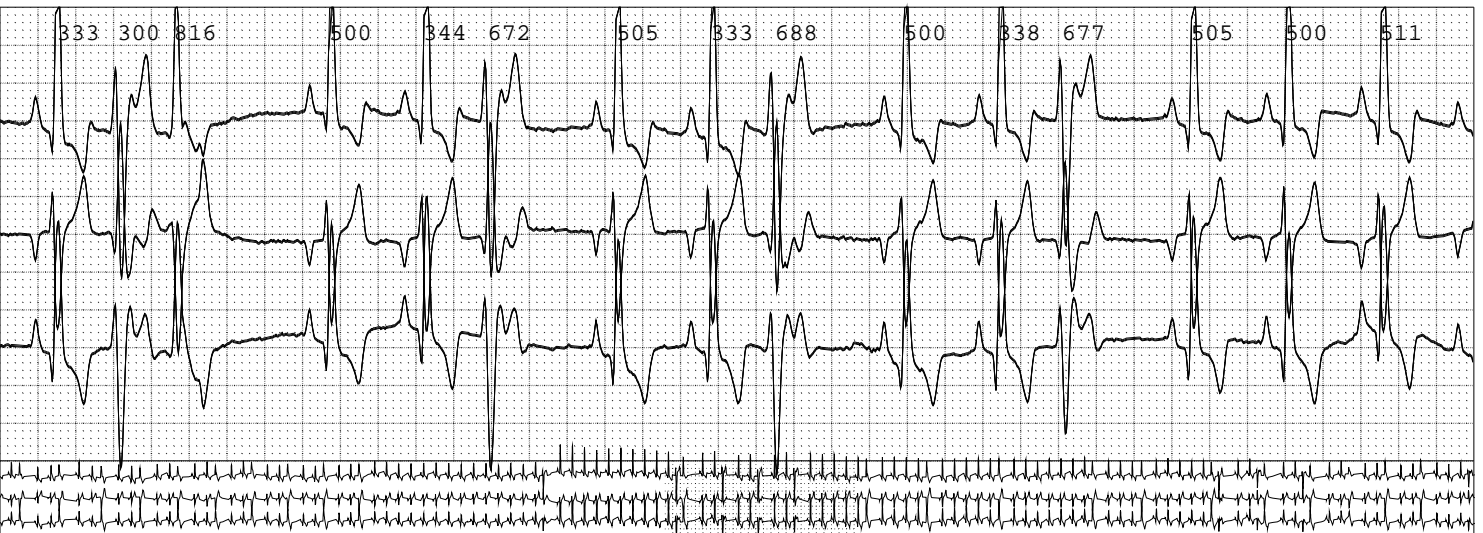
HR = 110



2:29:14AM2

Early VPB

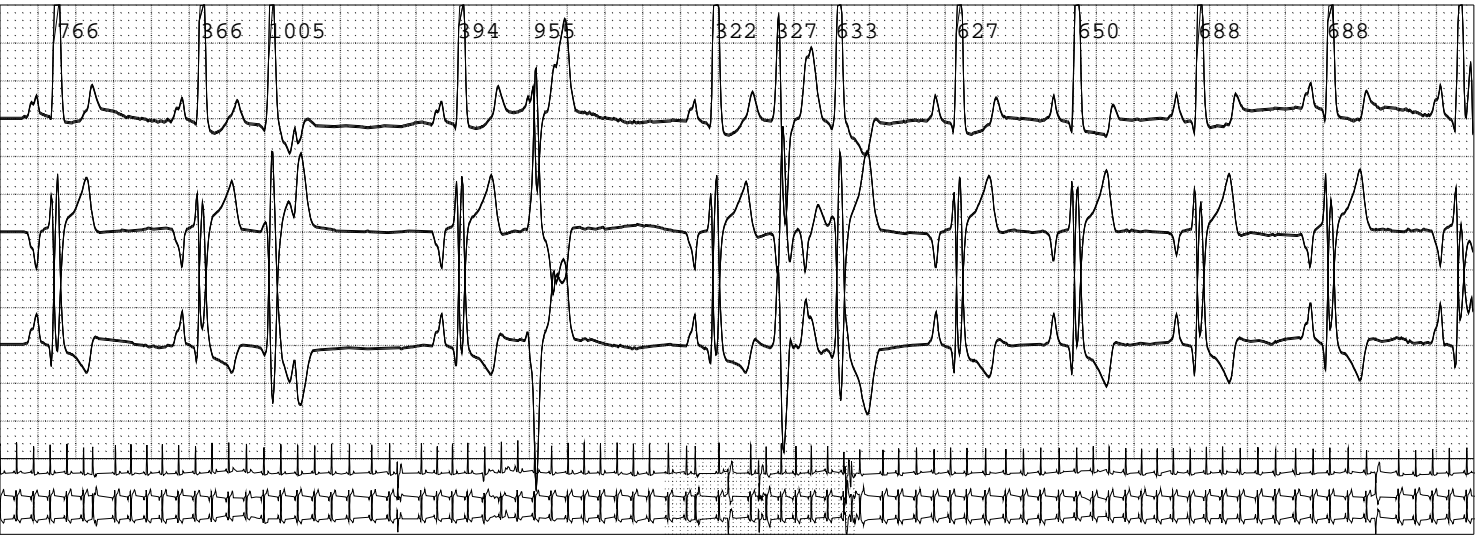
HR = 118



3:49:42AM2

VPB pair

HR = 85



4:14:39AM2

Min. heart rate

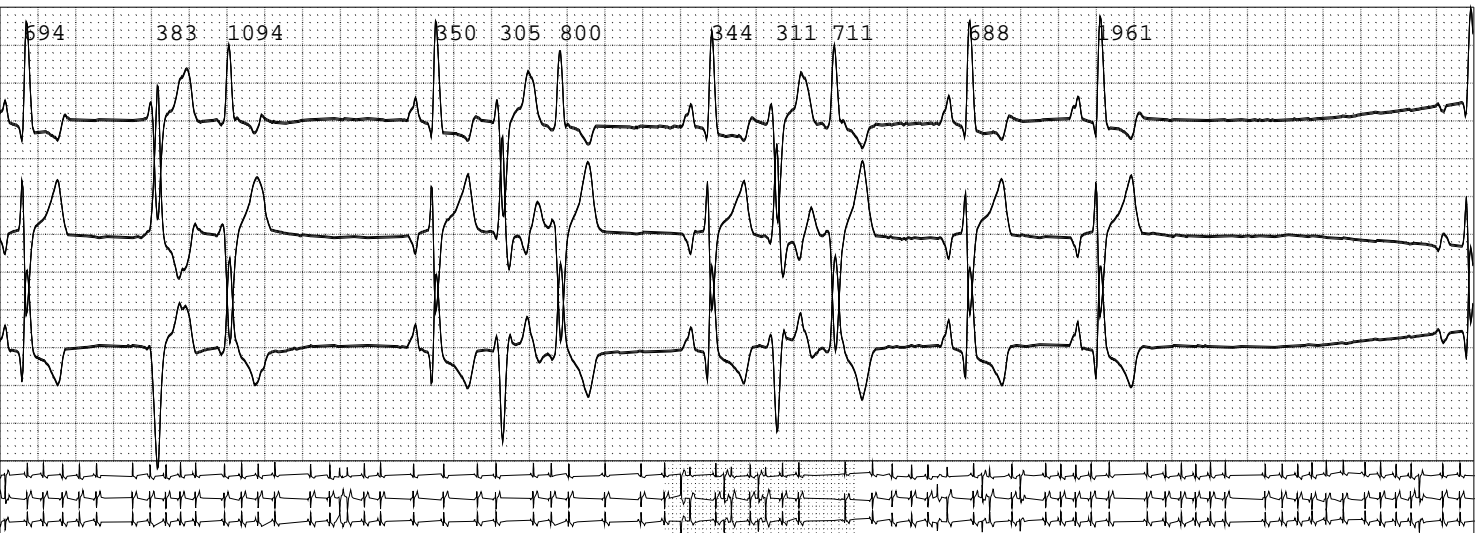
HR = 36



4:27:51AM2

VPB pair

HR = 76

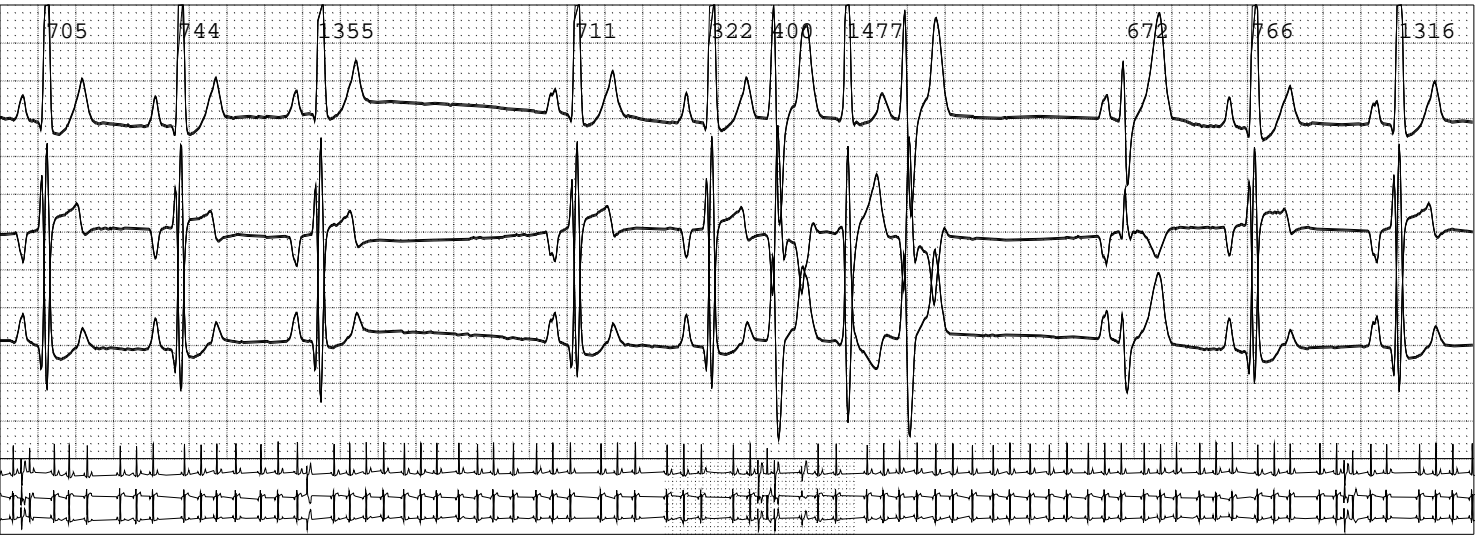


4:57:41AM2

TRIPLET

HR = 78

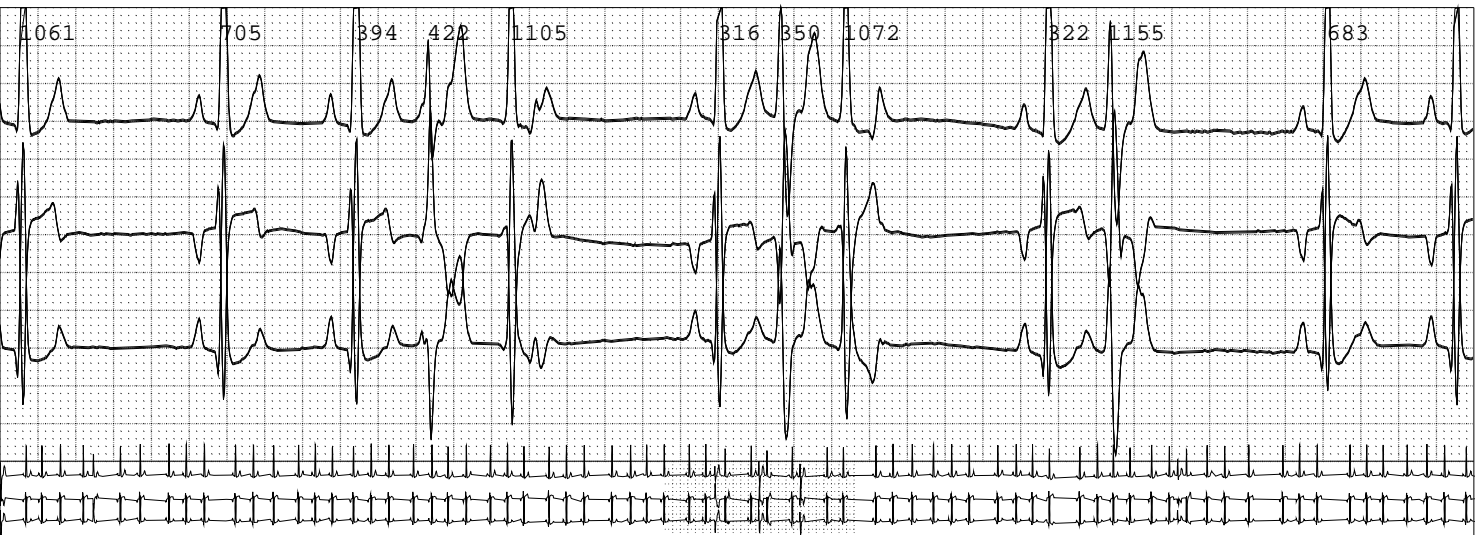
HR2 = 63



5:23:09AM2

VPB pair

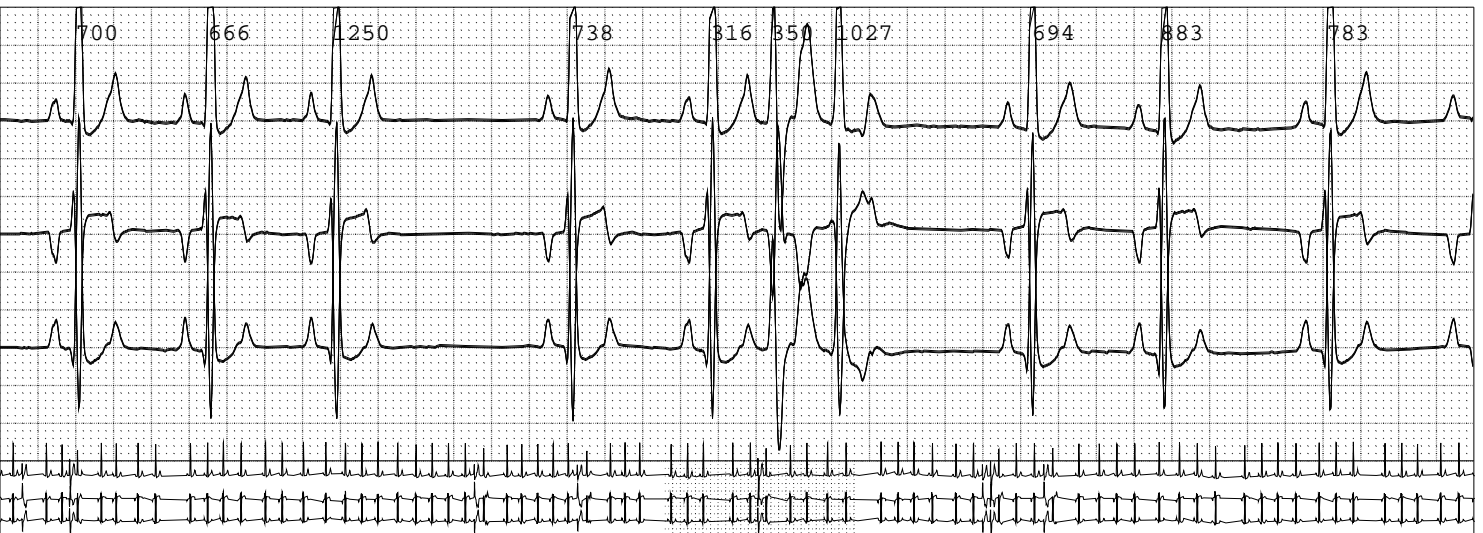
HR = 81



6:05:27AM2

VPB pair

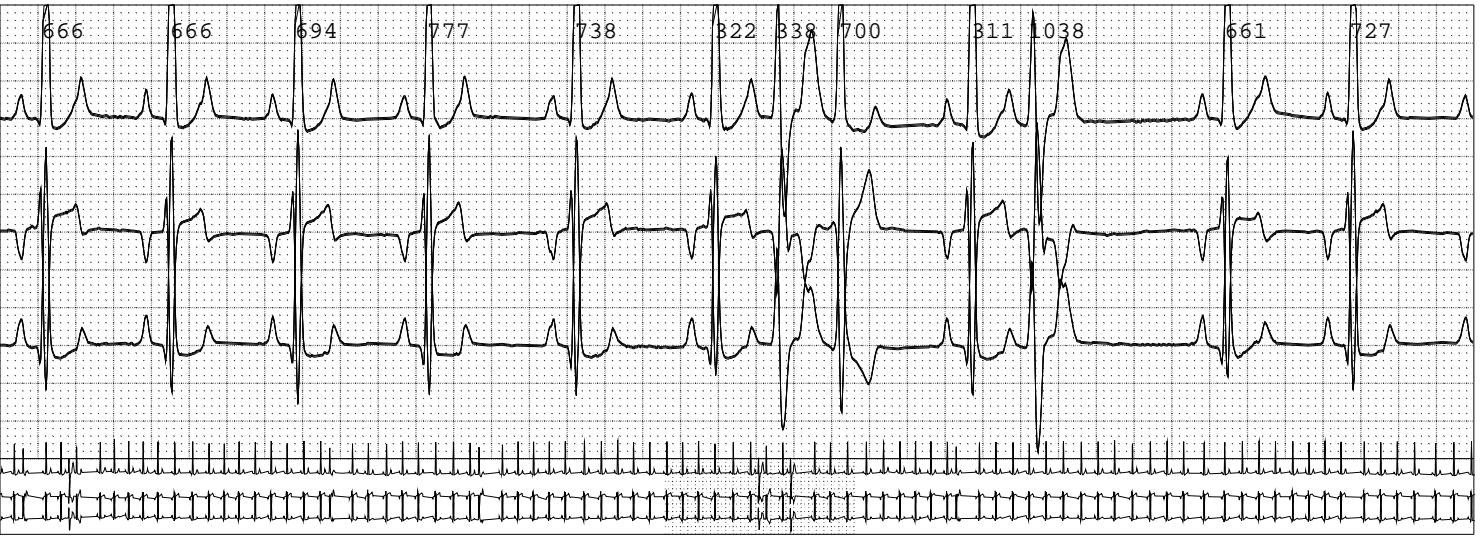
HR = 88



6:37:33AM2

VPB pair

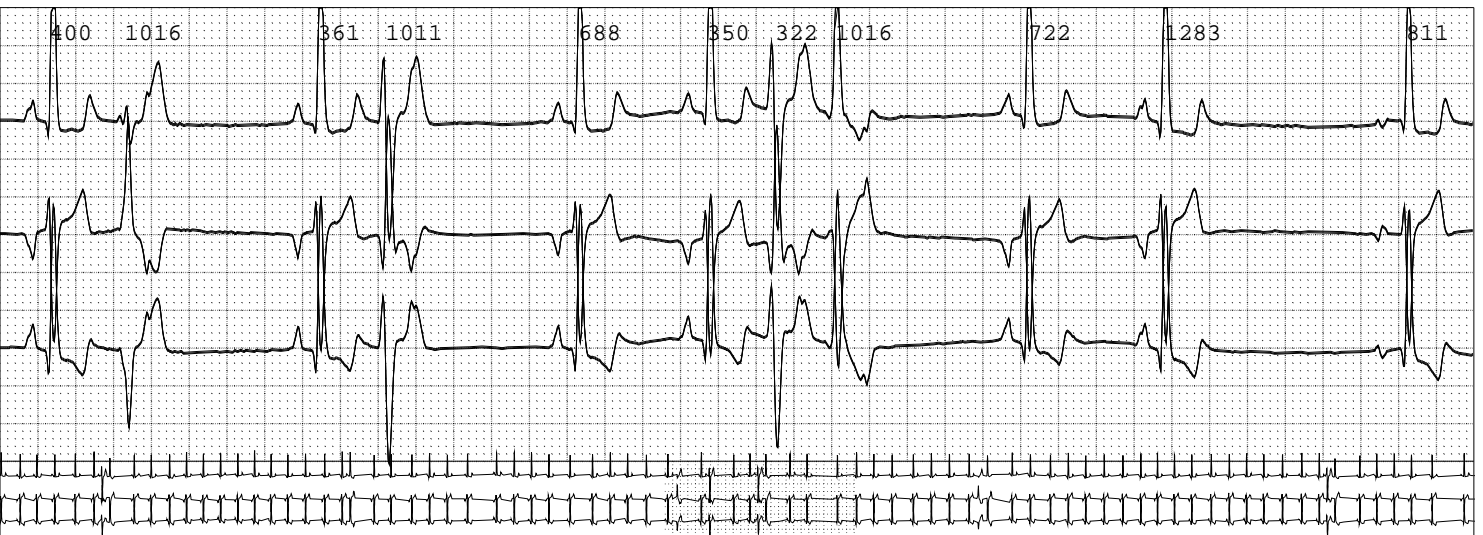
HR = 87



8:16:02AM2

VPB pair

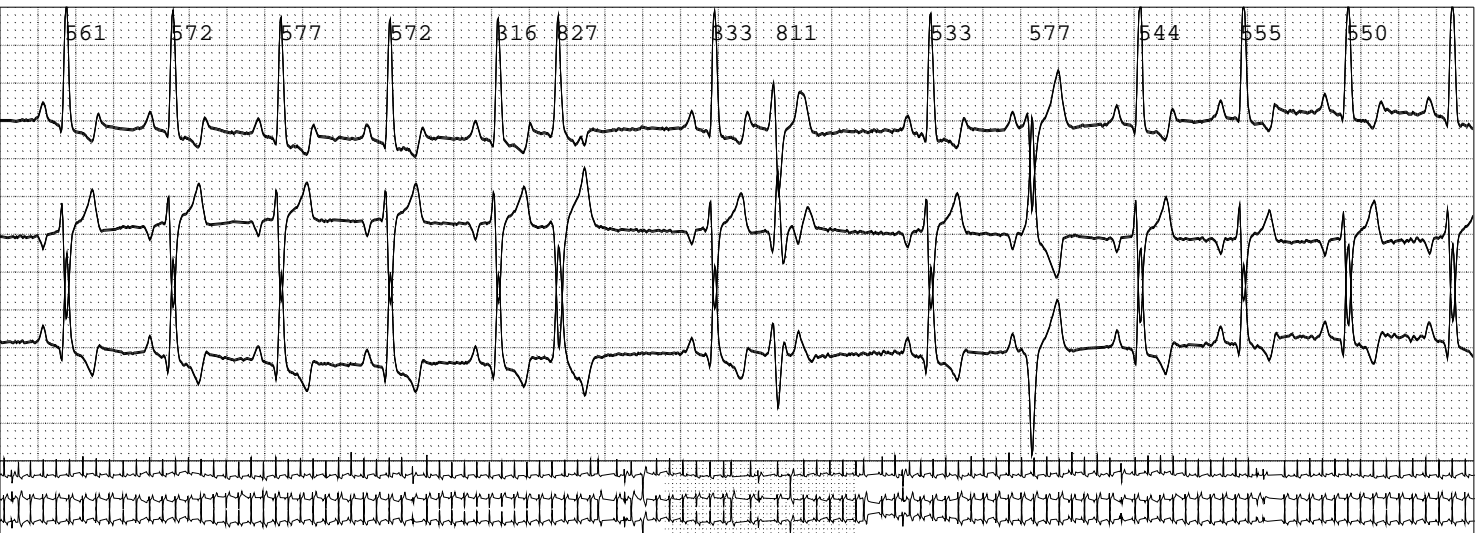
HR = 76



9:14:32AM2

Early VPB

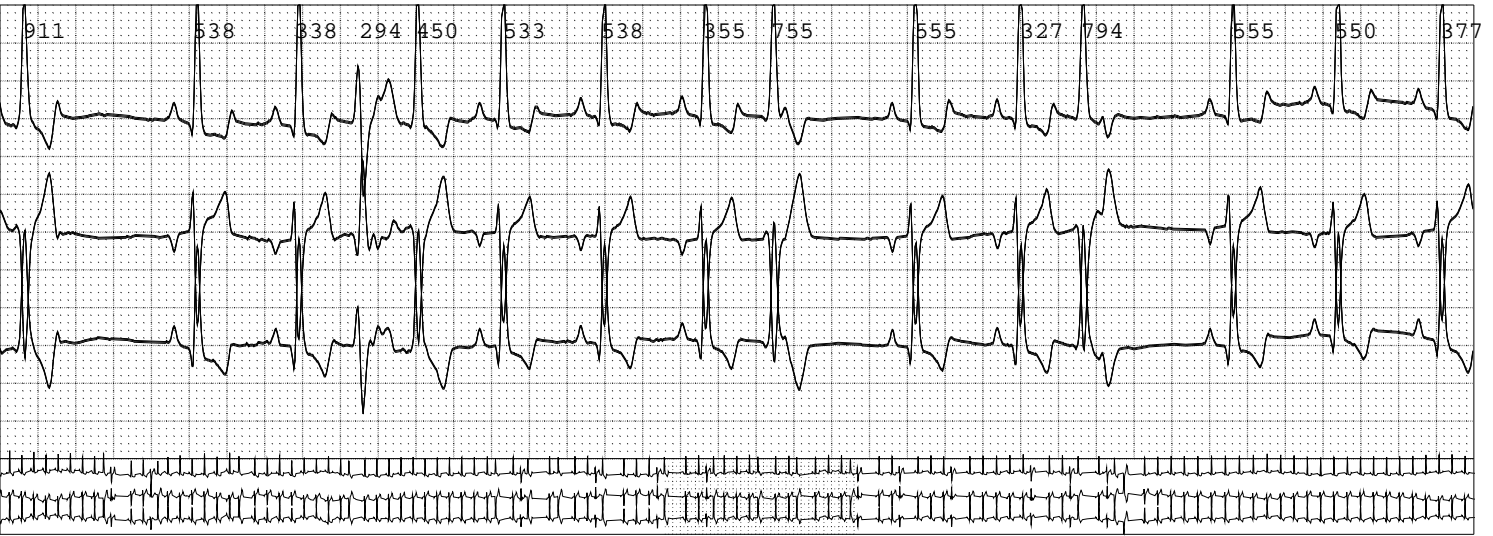
HR = 113



9:29:16AM2

Early VPB

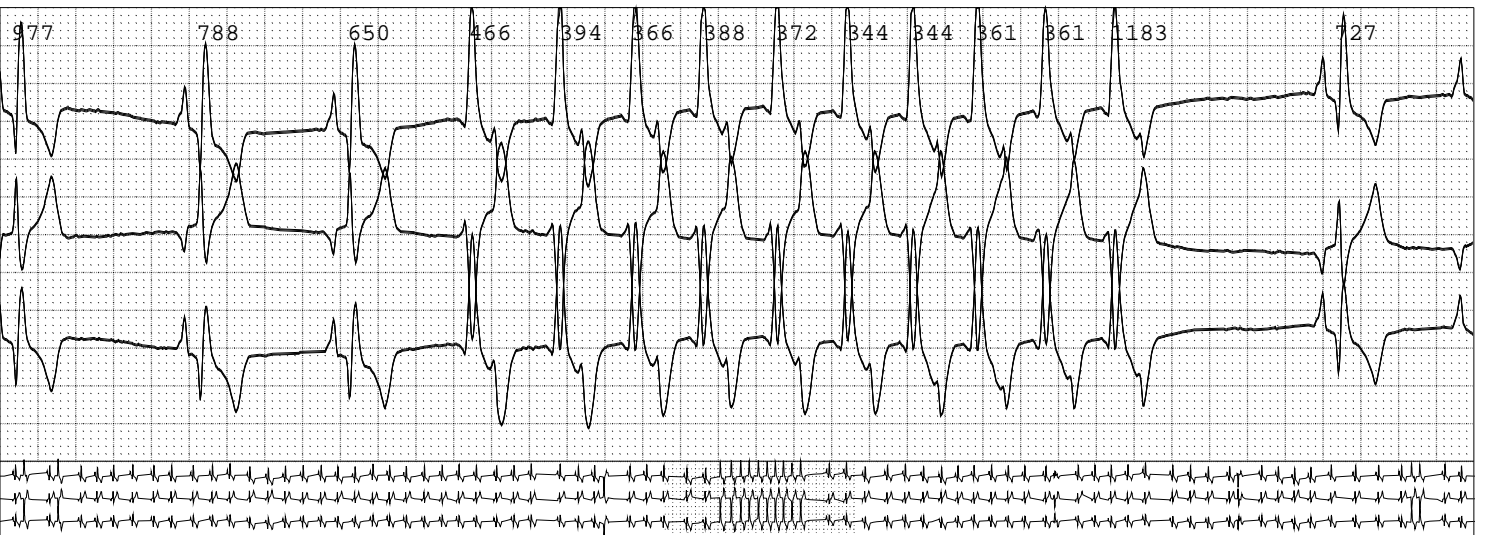
HR = 111



11:49:31AM2

VTAC

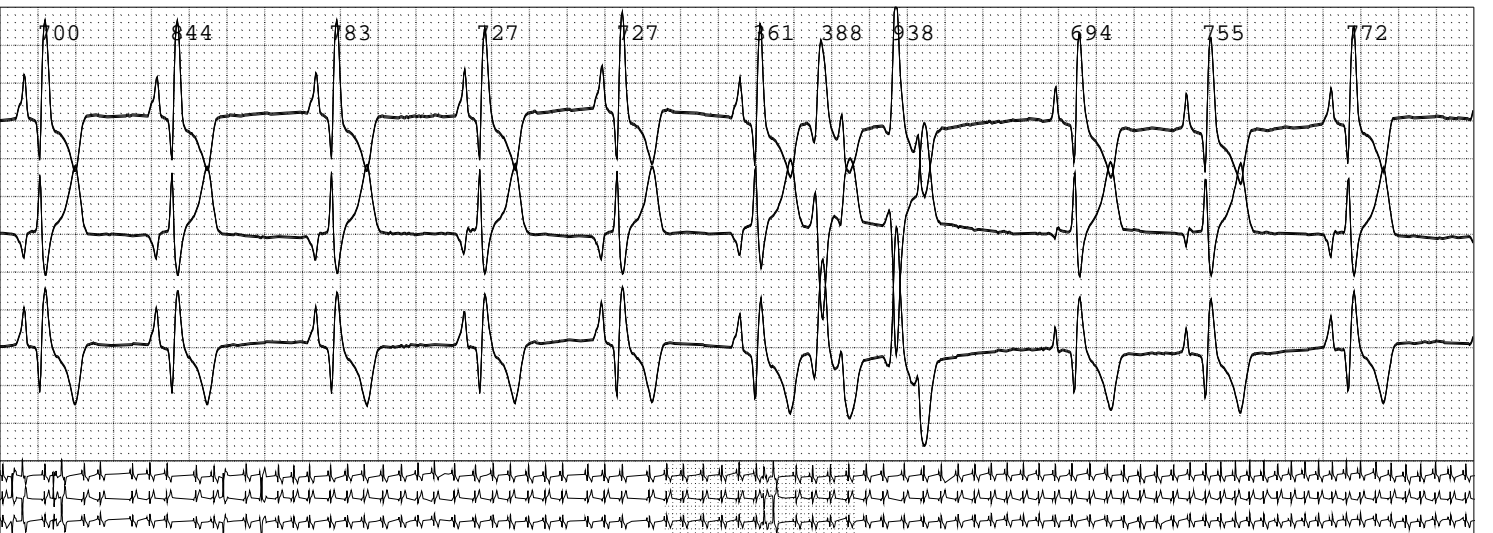
HR = 82



12:00:16PM2

VPB pair

HR = 80

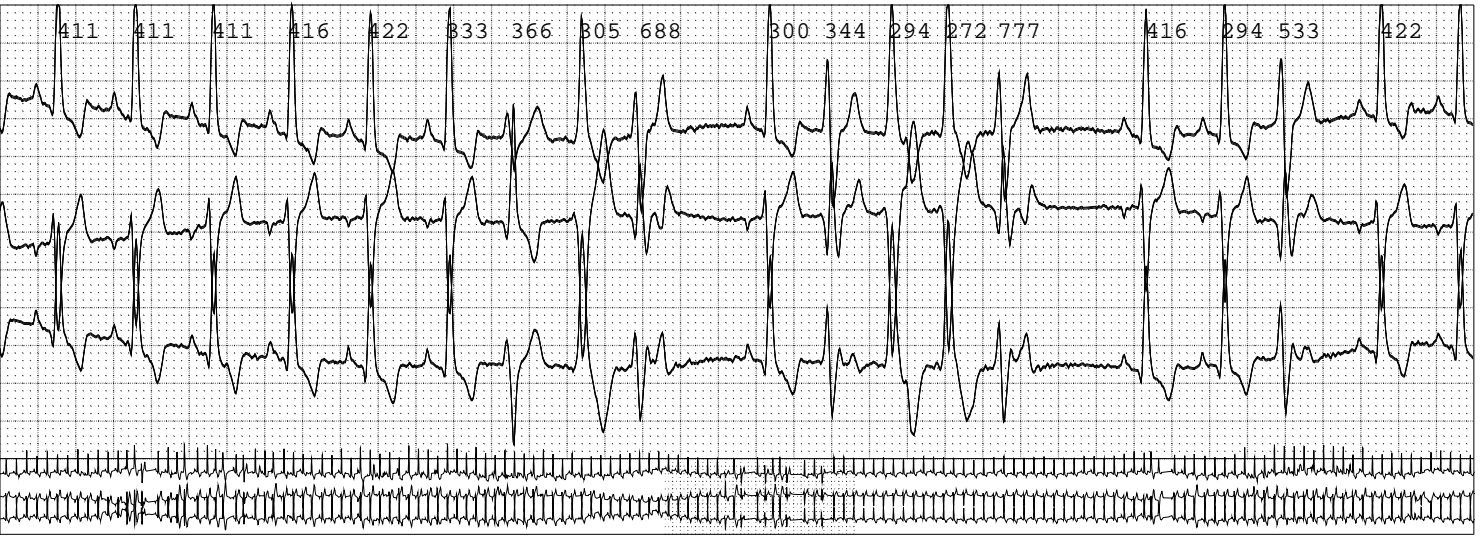


4:38:09PM2

VTAC

HR = 152

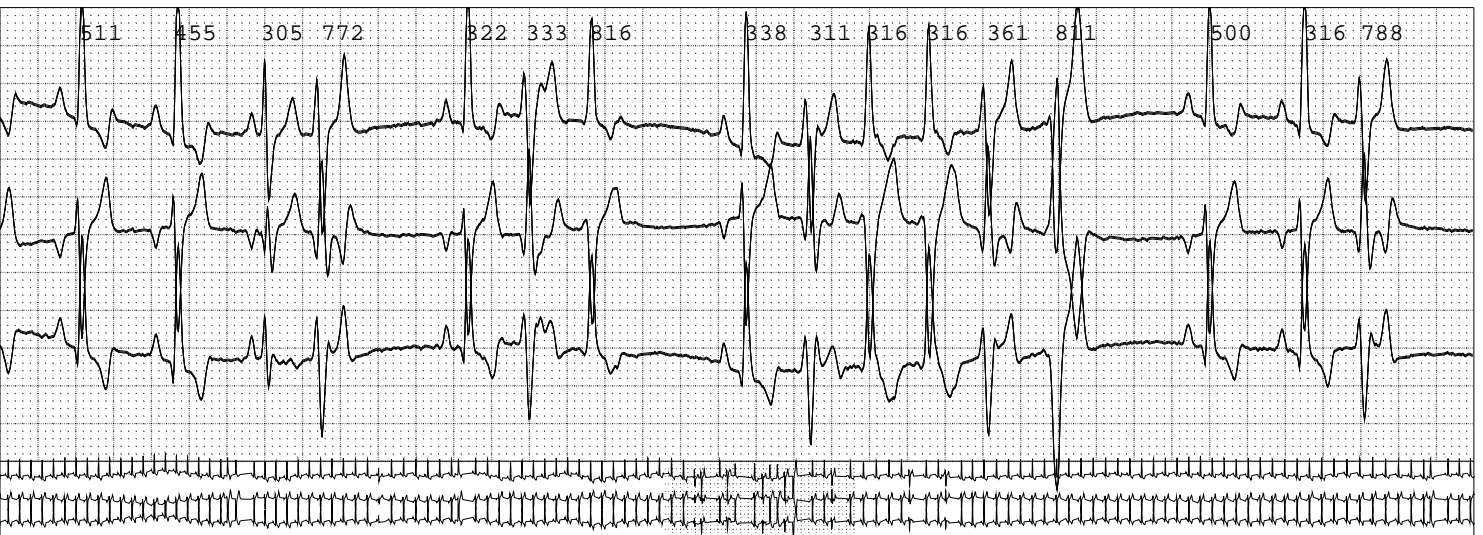
HR2 = 211



4:43:43PM2

VTAC

HR = 122

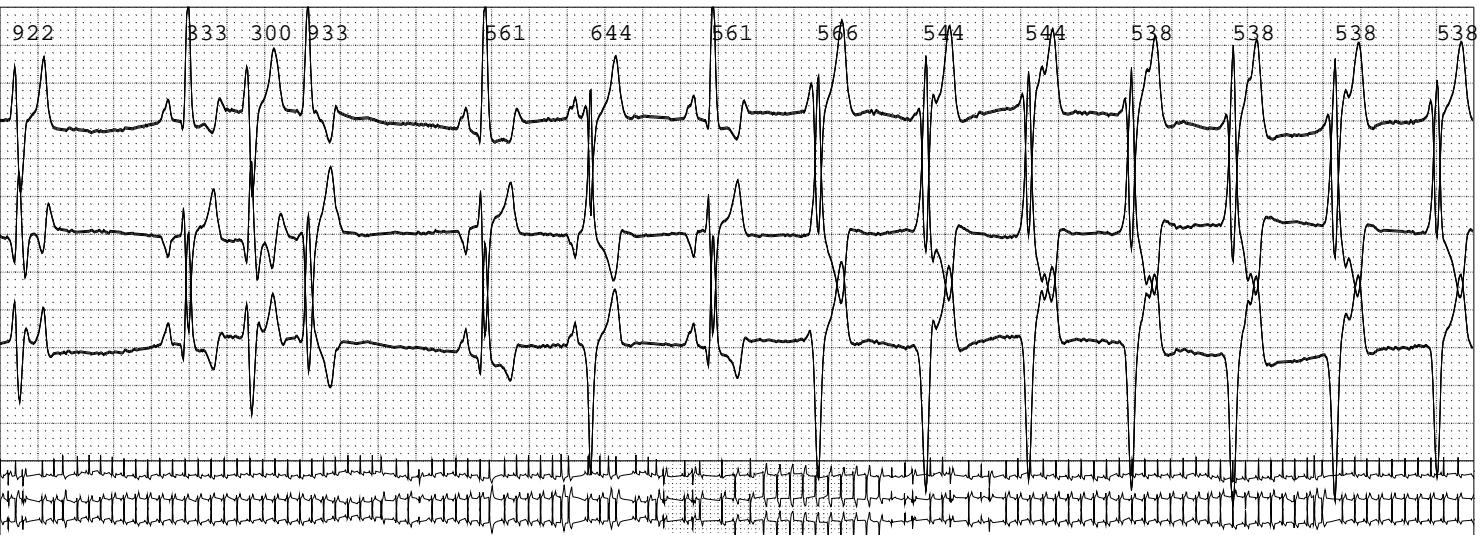


4:45:08PM2

VPB RUN

HR = 110

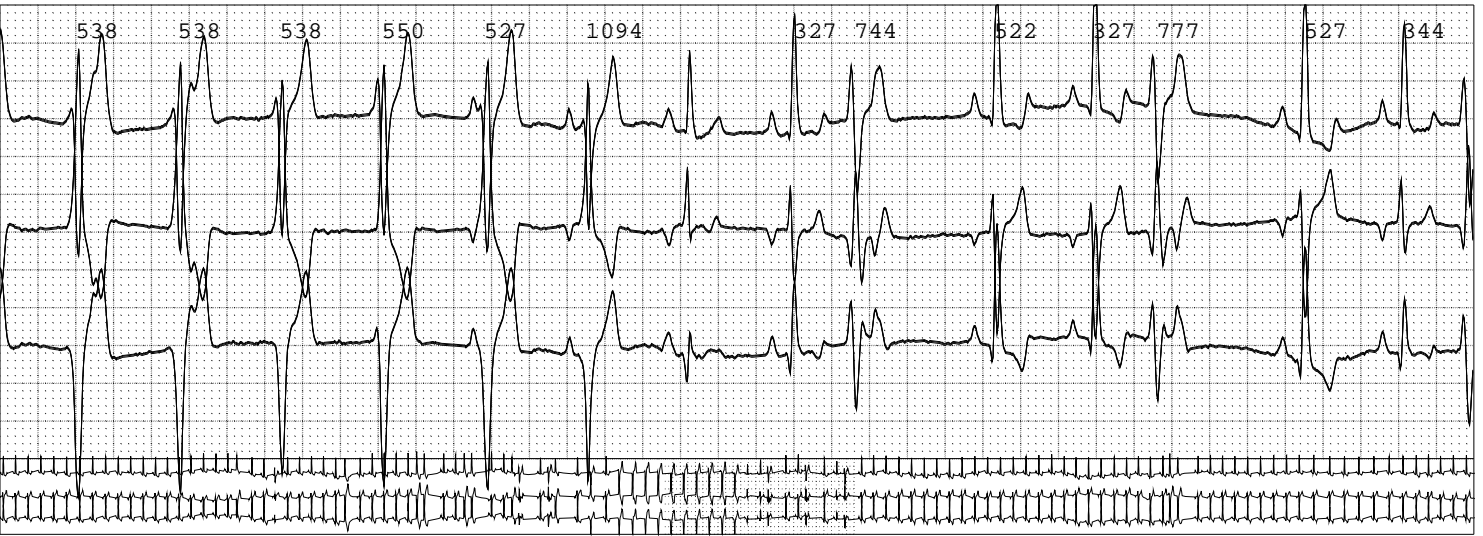
HR2 = 111



4:45:15PM2

End of episode

HR = 108



5:26:11PM2

VPB pair

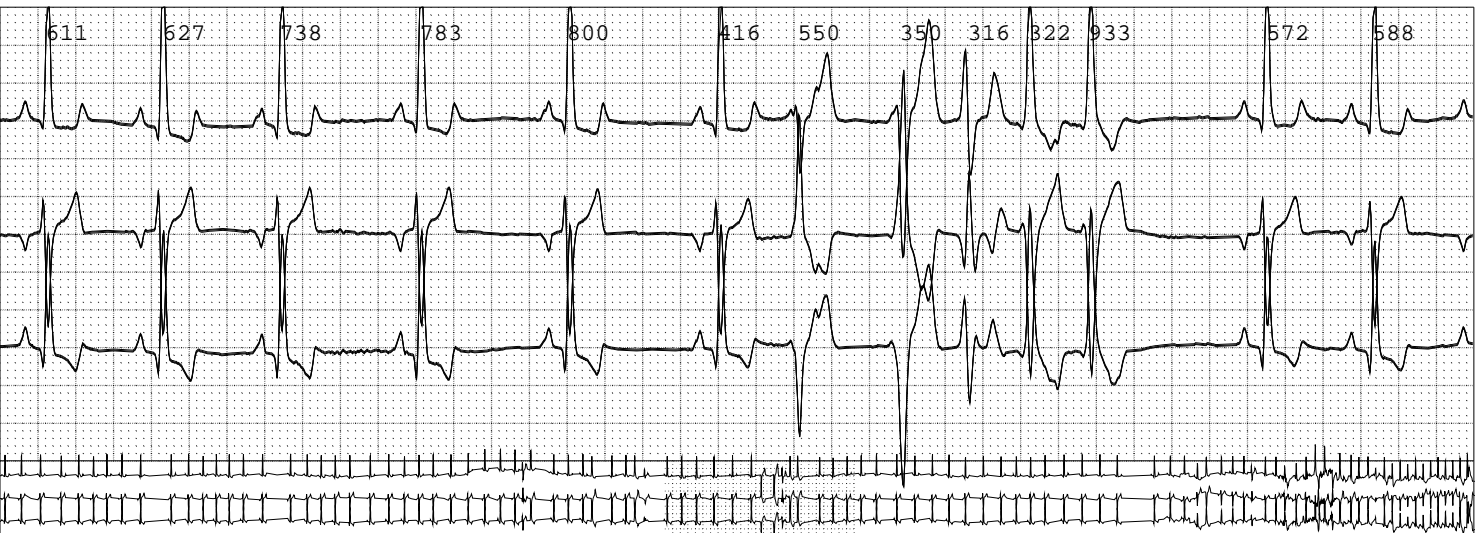
HR = 103



5:43:52PM2

VTAC

HR = 88

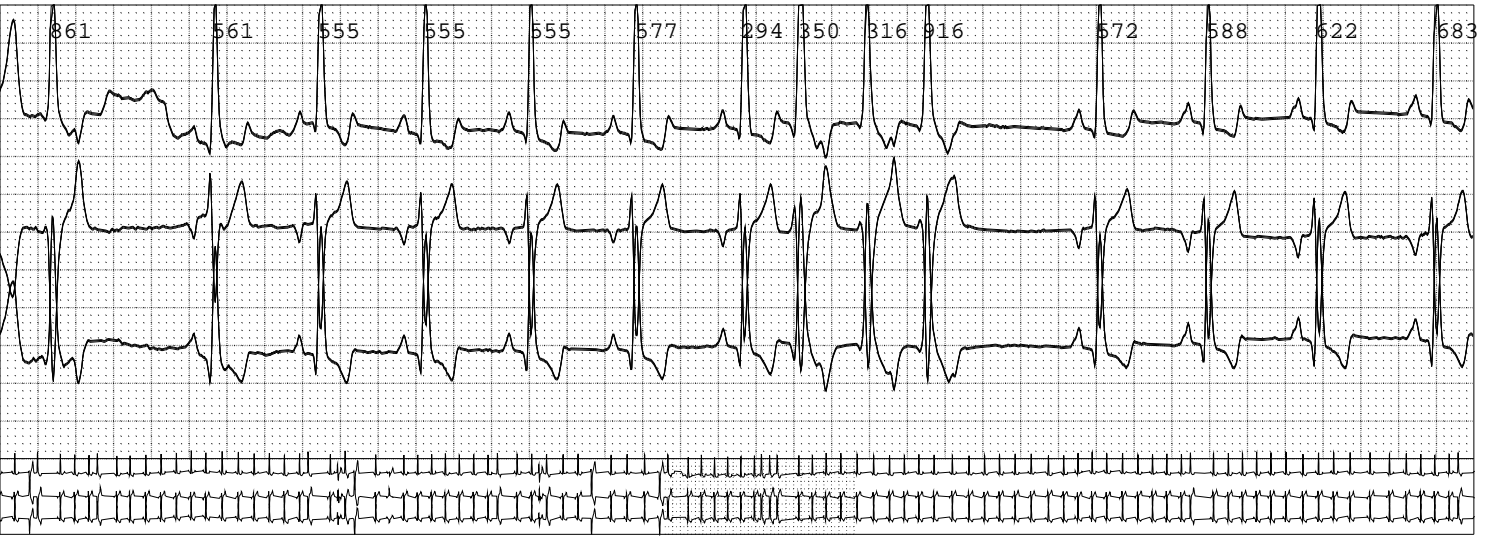


5:51:32PM2

VTAC

HR = 109

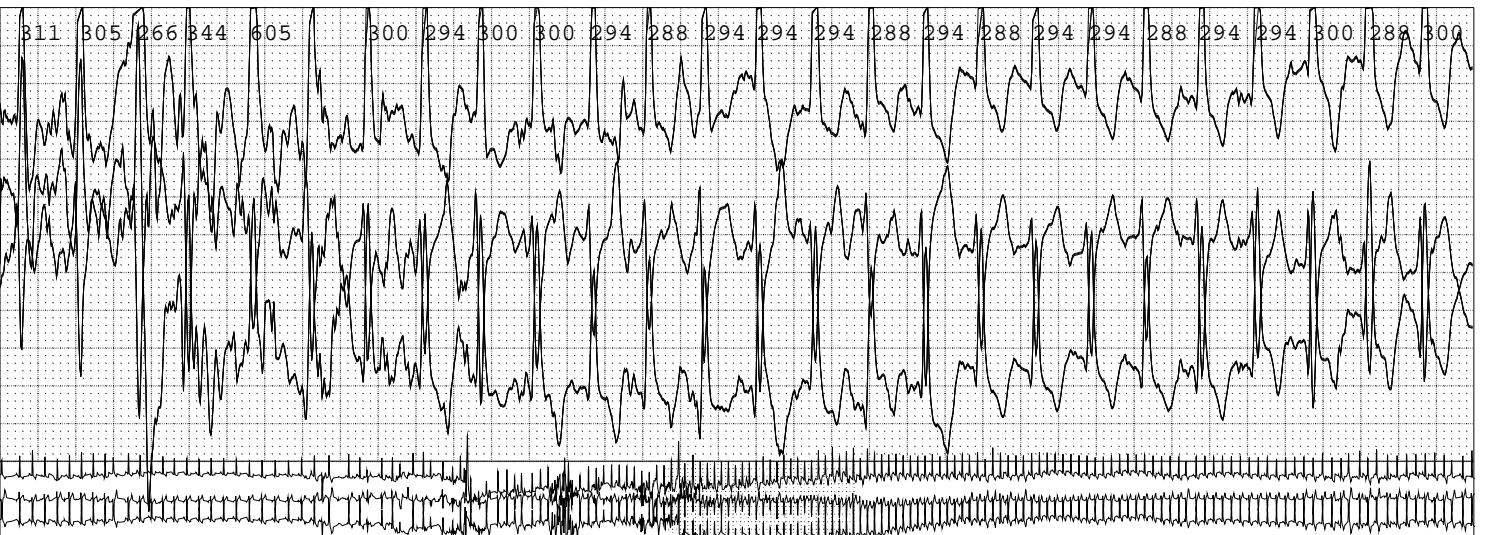
HR2 = 180



6:10:06PM2

Max. heart rate

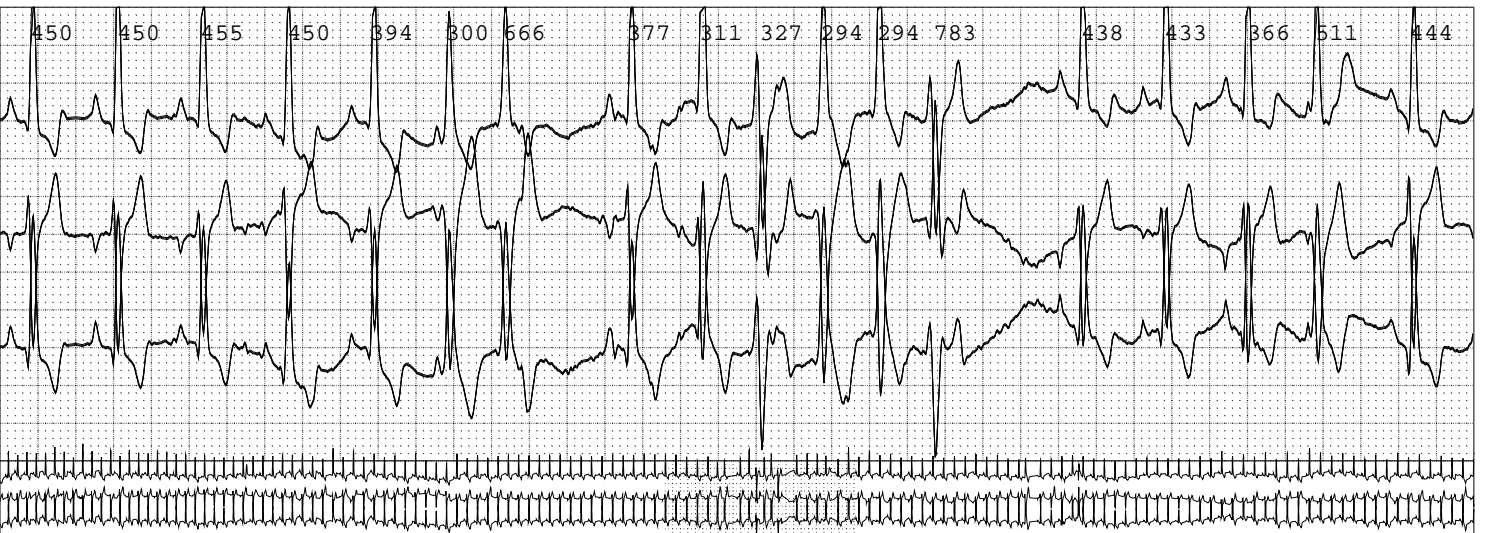
HR = 207



6:12:59PM2

VTAC

HR = 145



8:12:25PM2

VPB pair

HR = 96

